



HOW TO FILL OUT A SPRUCE MEADOWS ENTRY FORM

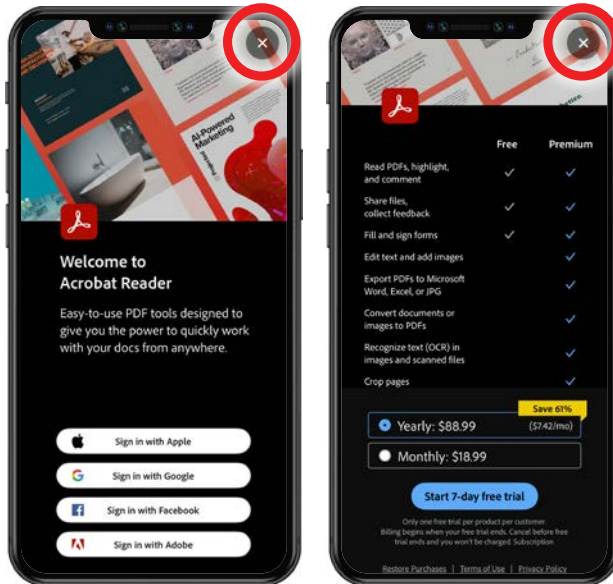
ON A MOBILE DEVICE (IOS/ANDRIOD)

1.



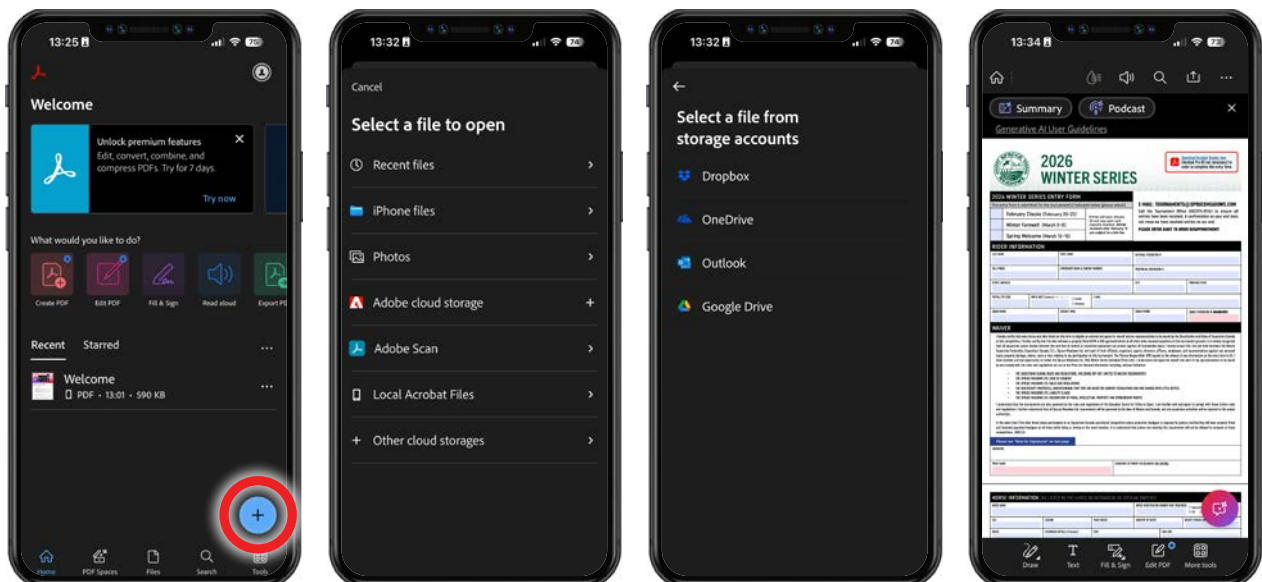
[Tap here to download Adobe Acrobat Reader](#)
in order to complete this entry form (FREE)

2.



When you first launch Adobe Acrobat Reader, close out all of the popups by selecting the "X" icon located at the top right hand corner of the screen.

3.



To open a new file, click the blue "+" button located in the bottom right hand corner. You will be prompted to open a PDF file, that is either saved on your devices or your cloud storage. By default, Spruce Meadows entry forms saved from the website on mobile device will be saved to "Recents" or "Downloads" in the Files app on your phone (this applies to both iOS and Android devices.)



The image displays three sequential screenshots of the EquiLink app interface, illustrating the registration process for the 2026 Winter Series Entry Form. Each screenshot has a red circle highlighting a specific selection.

Screenshot 1: 2026 WINTER SERIES ENTRY FORM
 The top section shows the form title and a submission status. Below, there are checkboxes for various events. The checkbox for "Winter Farewell (March 5-8)" is checked, indicated by a red circle.

Screenshot 2: RIDER INFORMATION
 This section contains fields for rider details. A red circle highlights the "YES" radio button for the question "IS THIS HORSE FULL CANADIAN OWNED?".

Screenshot 3: COMPETITION YOU INTEND TO ENTER
 This section displays a table of competitions. A red circle highlights the "Yes" checkbox for the "Winter Farewell (March 5-8)" competition.

5. a)

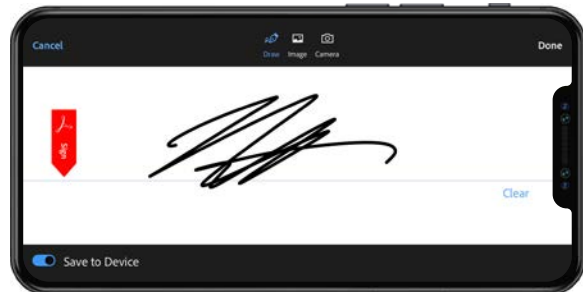
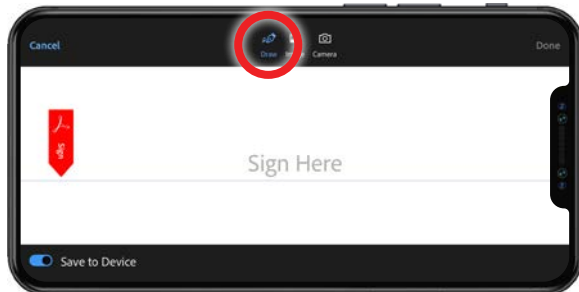
The image displays three smartphones side-by-side, each showing a different screen of a mobile application. The application is titled '2026 WINTER SERIES' and features a green and white color scheme with a logo of a tree and a building. The top status bar of each phone shows the time and battery level. The left phone shows a 'Summary' screen with a 'Generate All User Guidelines' button. The middle phone shows a 'Done' screen. The right phone shows a screen with two buttons: 'Add signature' and 'Add initials', both of which are circled in red. The background of the application is a light blue and white grid pattern.

To add a signature, tap the "Fill & Sign" option at the bottom of the screen. Follow the prompts on screen.



HOW TO FILL OUT A SPRUCE MEADOWS ENTRY FORM ON A MOBILE DEVICE (IOS/ANDRIOD)

5. b)



After you create your signature, it be saved locally and can be re-added in the document in areas that require the signature (see screenshot below).

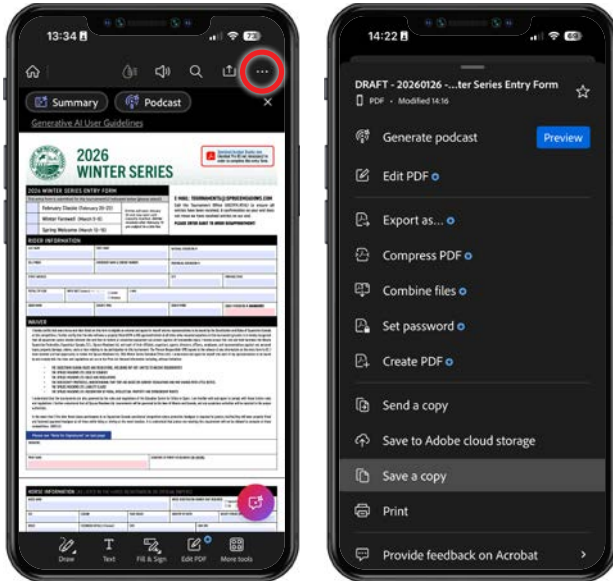




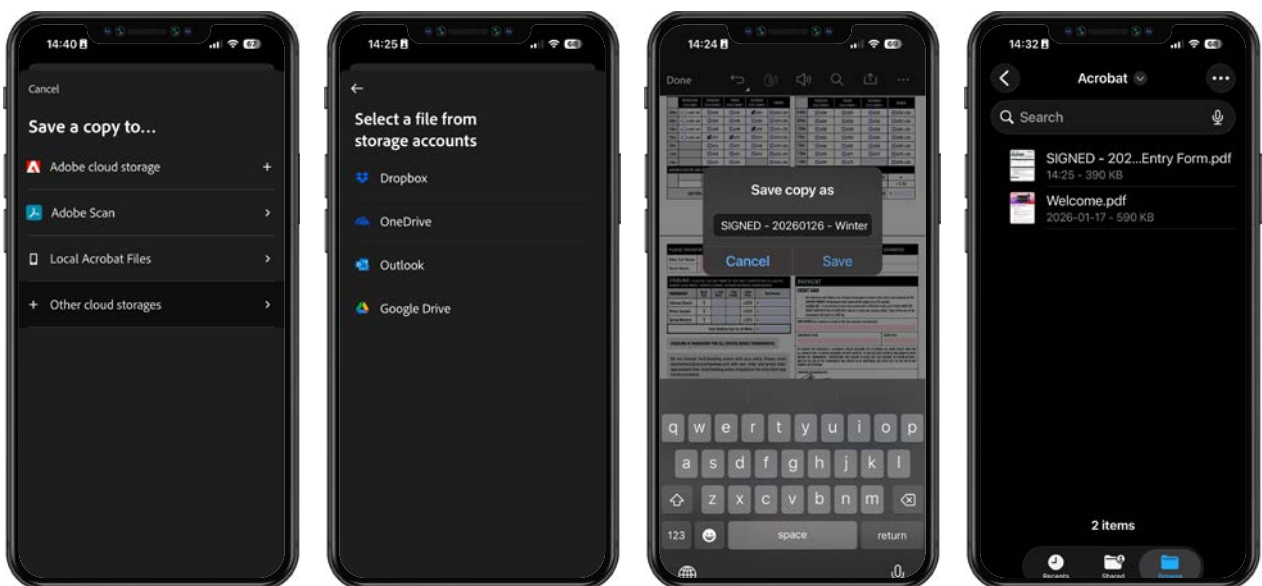
HOW TO FILL OUT A SPRUCE MEADOWS ENTRY FORM

ON A MOBILE DEVICE (IOS/ANDRIOD)

6.



Adobe Acrobat Reader auto-saves your work everytime you make a change or close out of the document. It will also appear in your "Recents" for easy access. Once you have completed filling out the form, select the "... " icon located in the top right hand corner and scroll down in the menu to "Save a copy".



By default, Acrobat will save your form in the "Acrobat" folder located in your phone's Files app, but it supports saving the completed file to Dropbox, OneDrive, or Google Drive.