

PRIZE LIST



'Continental'

'National'

'Pan American'

'North American'

'MASTERS'

PRESENTED BY ROLEX

PRESENTED BY ROLEX

PRESENTED BY ROLEX

CSI 5*/2*
National Divisions
Jun. 3-7, 2026

CSI 5*/2*
National Divisions
Jun. 9-14, 2026

CSI 5*/2*
National Divisions
Jun. 24-28, 2026

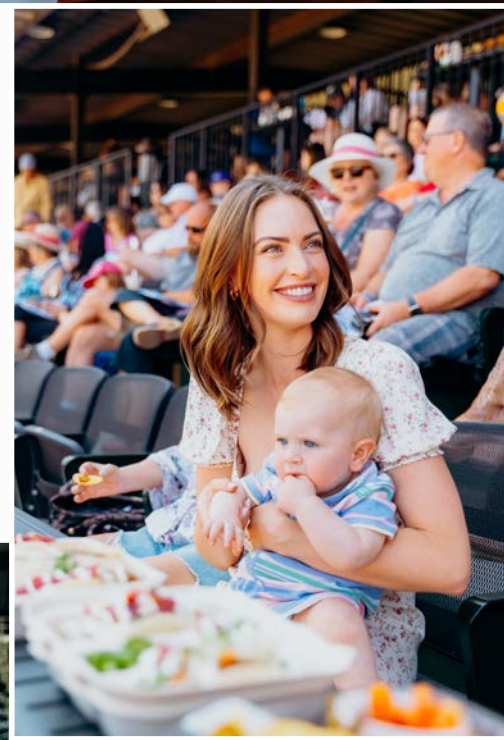
CSI 5*/2*
National Divisions
Jun. 30-Jul. 5, 2026

CSIO 5*/CSI 2*
National Divisions
Sep. 8-13, 2026



PREMIUM SEATING AT SPRUCE MEADOWS

Elevate your Spruce Meadows tournament experience this season with our premium seating options! Enjoy unparalleled views from the best vantage points. Upgrade to a new level of comfort and style, ensuring you won't miss a moment of the action. Purchase your elevated seating now for an unforgettable season at Spruce Meadows!



2026 LIVE & INTIMATE INDOOR CONCERTS

SPRUCE MEADOWS

THE BLACK KEYS (SOLD OUT)
JEREMIE ALBINO
JUNE 5 & 6

DALLAS SMITH
JUNE 12

MAREN MORRIS
JUNE 13

SAM ROBERTS BAND
REUBEN BULLOCK
JUNE 19

BARENAKED LADIES
JUNE 20

ST. PAUL & THE BROKEN BONES
THE HEAVY HEAVY
JUNE 26

STEPHEN SANCHEZ
JUNE 27

JIMMY EAT WORLD
JULY 3

CHARLEY CROCKETT
KASHUS CULPEPPER
JULY 4



SPRUCEMEADOWS.COM/CONCERTS
TICKETS AND LUXURY VIP BOXES AVAILABLE. TICKETS ARE LIMITED, ACT FAST!

2026 SCHEDULE OF EVENTS

'CONTINENTAL'		CLOSING DATE:	DEFINITE DATE:	25
CSI 5*/2* + National Divisions	JUNE 3–7, 2026	April 15	April 24	

'NATIONAL' presented by Rolex		CLOSING DATE:	DEFINITE DATE:	31
CSI 5*/2* + National Divisions	JUNE 9–14, 2026	April 15	April 24	

'PAN AMERICAN' presented by Rolex		CLOSING DATE:	DEFINITE DATE:	36
CSI 5*/2* + National Divisions	JUNE 24–28, 2026	April 15	MAY 15	

'NORTH AMERICAN' presented by Rolex		CLOSING DATE:	DEFINITE DATE:	43
CSI 5*/2* + National Divisions	JUNE 30–JULY 5, 2026	April 15	MAY 15	

'MASTERS'		CLOSING DATE:	DEFINITE DATE:	51
CSIO 5*/CSI 2* + National Divisions	SEPT 2–7, 2026	August 13 (TBC)	August 20 (TBC)	

Letter to Athletes	2
General Information	5
FEI Rules & Regulations	18
Equestrian Canada Rules & Regulations	22
2027 Tournament Dates	59



DEAR ATHLETE,

Welcome to the 2026 edition of the Spruce Meadows FEI Tournaments.

For more than 50 years, we have been proud to play a part in the sport of show jumping and its global community. Over that time, Spruce Meadows has continued to evolve, always striving to enhance the experience for athletes, horses, and spectators alike.

When you arrive at Spruce Meadows in 2026, you will notice a number of exciting changes. While we continue to grow and innovate, one thing remains constant: **our deep commitment to the traditions that define Spruce Meadows.**

These traditions include our renowned grass competition rings, our iconic natural obstacles, the World Championship and Olympic jump collections featured throughout the rings, our presentations to winning athletes, exceptional prize money, and of course, the unforgettable victory gallop.

Our team has focused on delivering an exceptional lineup of competitions throughout our national and international tournaments, designed to challenge and reward riders at every level.

This year, as always, you and your team will be welcomed by the enthusiastic Spruce Meadows crew, who have created unforgettable experiences for everyone to enjoy when you are not competing in the jumping ring. Beyond world-class sport, we are proud to offer memorable entertainment experiences for athletes, families, and fans alike.

This season's highlights include movie nights and our Concert Series, featuring The Black Keys, Dallas Smith, Maren Morris, Sam Roberts Band, Barenaked Ladies, St. Paul & The Broken Bones, Stephen Sanchez, Brett Kissel, Jimmy Eat World, Charley Crockett, and more!



Our new restaurant, Fox Trot, opened last fall at a limited capacity and is now fully open and operational for the 2026 season. The team at Fox Trot Restaurant and Café Fox Trot look forward to welcoming you and serving exceptional coffee, as well as delicious lunch and dinner offerings throughout your visit.

We are also pleased to welcome a new catering provider who will oversee food offerings across the grounds, including concessions, hosting venues and Time Faults. We look forward to introducing you to these new culinary options and hope you enjoy the enhanced dining experience during your time at Spruce Meadows.

Join us for an extraordinary season of show jumping and an unforgettable entertainment adventure at Spruce Meadows.

We are delighted to welcome you back and look forward to another remarkable season of world-class sport.

Sincerely,

Linda Southern-Heathcott
President & CEO, Spruce Meadows



GENERAL RULES & REGULATIONS

Stateside

HORSE TRANSPORTATION INC

The trusted transporter of choice for North America's
top equine athletes across Canada & the USA.

Servicing Spruce Meadows' Summer Series.
Official Transporter of the Spruce Meadows Masters Tournament Charters.



CROSS COUNTRY TRANSPORTATION • CHARTERS • BROKERAGE/CARNET SERVICES
AIR AGENT & QUARANTINE TRANSPORTATION • LOGISTICS • USDA/CFIA COMPLIANCE

Offices in:

Vancouver, BC
778-234-1501

Rancho Santa Fe, CA
858-864-8550

Wellington, FL
561-565-5676

Stateside Horse Transportation, Inc • www.statesidefarms.com • Est 1996, DOT/MC/NSC Compliant



GENERAL INFORMATION

Tournament Office Phone: 403.974.4516

E-mail: tournaments@sprucemeadows.com

Website: www.sprucemeadows.com

Website Portal for Digital Uploads and Pre-order Requests:

To digitally upload your documents or pre-order feed, bedding, or a paddock, please visit the Orders & Uploads link above on our website.

sprucemeadows.com/preorder/
(CODE: Summer2026)

All mail should be sent to the attention of:

Spruce Meadows Tournament Office
18011 Spruce Meadows Way SW
Calgary, Alberta, T2X 4B7

GENERAL RULES & REGULATIONS

The Spruce Meadows Tournaments will be conducted according to the current rules of Equestrian Canada (EC), the FEI and the Organizing Committee (OC) of Spruce Meadows.

In entering Tournaments at Spruce Meadows, you and your team have agreed to honour the General Information as specified in this Schedule and on the entry form. Your agreement and acceptance of all rules, regulations and Spruce Meadows decisions is indicated by competing at our Tournament. If the competitor is a minor, it shall be understood that the parent/legal guardian will assume all responsibilities/liabilities of the competitor.

If there is a conflict between the FEI Rules & Regulations and the Spruce Meadows General Information provided in this section, the laws of the land and the FEI Rules & Regulations take precedence for FEI competitors in FEI competitions.

BIOSECURITY

The Spruce Meadows OC, in consultation with veterinary and animal health authorities, have determined the protocol deemed necessary in order to reasonably and effectively manage the possible biosecurity concerns. It is STRONGLY recommended that you consult with your veterinarian regarding the most appropriate vaccination protocol for your horse.

All horses being brought onto the grounds shall not have been in contact with sick horses within the last 21 days, and must not be showing any signs of illness. All horses on the grounds are expected to have their temperatures taken and recorded regularly and twice daily for the 3 days preceding arrival. Please have temperature records available upon request. Any elevated temperature or other signs of illness must IMMEDIATELY be reported to the FEI veterinary delegate or treating veterinarian and the tournament office

Please avoid direct and/or indirect contact between horses, especially nose-to-nose contact, the use of common feed/water buckets and individuals handling horses from different barn groups. Individuals should not be entering the barn area of a different group. Please wash/sanitize your hands frequently throughout the day.

All horses must have their temperatures taken and recorded twice daily, while on the grounds. Any horse stabled in FEI must

have their temperatures recorded via the FEI Horse Health App. This includes during the off week.

In the event of a biosecurity event, horses may be required to remain on property until official veterinarians/government officials deem it safe to clear them. The OC will not be liable for any additional fees/expenses in this situation.

The Spruce Meadows OC, as well as the Veterinary Commission/delegates and government regulators, will closely monitor any developments regarding any potential biosecurity issues and will change the procedures and requirements for horses/humans entering the grounds as needed.

Regulations surrounding COVID-19 requirements or import regulations may change with little/no notice.

COGGINS, EQUINE INFLUENZA, & EHV

Competition horses must have a current negative coggins test (valid for 6 months from date drawn), equine influenza, and EHV vaccination (valid for 6 months from the vaccination date but not within 7 days of arrival to the grounds), copies of which must be received by May 20 (August 20 for 'Masters'). If an FEI horse does not have an EHV vaccination, their movement around the grounds will be severely restricted.

The name on all documents must match the horse's name on entry form and passport/horse recording. Forms completed with horse's barn name will not be accepted.

TOURNAMENT OFFICE

The Tournament Office is open from 10:00 a.m. to 4:00 p.m. on non-tournament days, and from 30 minutes before the start of competition until 4pm on competition days. Staff is generally not available after hours without prior arrangement.

Riders are able to start, order feed, view their account(s) and close out via the Rider's Portal. An access code will be sent to you when we have received everything we require for your entry (including but not limited to payment, signatures and vaccination information). Please let us know if you would like someone else (e.g. trainer, barn manager) to have access to your portal. Staff are still happy to assist you in person during office hours.

PARKING

There will be designated parking areas on the grounds for competitors' vehicles and horse trailers. The accreditation issued to you at the start of the Tournament will act as your parking pass. There is designated RESERVED RV/camper parking. RVs/campers cannot park anywhere other than the designated RV sites. Vehicles and trailers WILL BE TOWED if parked in unauthorized areas. If you are parking a horse trailer at Spruce Meadows, it must be registered at the Tournament Office and parked in the designated location to avoid being towed. Horse trailers are subject to a \$75 parking fee.

2026 RESERVED RV PARKING RATES

Tournament	Check-In/Out dates	Full Site Service
Summer Series	June 1–July 6	\$2,800
North Star Tour 1	June 1–15	\$1,200



North Star Tour 2	June 22–July 6	\$1,200
'Masters'	September 7–14	\$600

Check-In Time: 12:00 P.M. Check-Out Time: 11:00 A.M.
Prices do not include CDN GST of 5%

Please call Spruce Meadows at 403.974.4516 to reserve.

FEED AND BEDDING

Feed/bedding must be ordered before 11:00 A.M. for same day delivery. Orders received after 11:00 A.M. may not be delivered until the next day.

Please check with the Tournament Office for a complete list of available products and prices. Feed and bedding can be preordered by email or through the Orders & Uploads button on the website. **Do not include feed orders on your entry form. Same-day orders are delivered last as preorders are given priority.** Feed/bedding orders are posted to the horse's account OR to a barn account. We are unable to split charges upon closing—please order your supplies accordingly. If you purchase feed or bedding from an outside supplier and have it delivered to Spruce Meadows, or bring your own hay/bedding, additional charges will apply.

Discrepancies in deliveries will not be considered unless brought to the attention of the Tournament Office on the day of scheduled delivery.

MOTORIZED VEHICLES

Horses have the right of way at all times.

Individuals who do not have a valid driver's license allowing them to operate a motorized vehicle in the province/state in which they reside will not be permitted to operate a motorized vehicle of any kind on Spruce Meadows' property.

Minors who have a valid temporary license may operate a motorized vehicle as long as they are accompanied by an adult with a valid driver's license. The parent(s), legal guardian(s), or individual who signs the entry blank as a parent or guardian of a minor operating a motorized vehicle in violation of this rule are solely responsible for any damages, claims, losses, or actions resulting from that operation. There may not be more passengers than seats on any motor vehicle. There is a 10 km/hr speed limit on the Tournament Grounds.

Violations of these rules may result in the individual or group being fined, or asked to leave the Tournament Grounds and a forfeiture of Tournament Fees paid and prize monies won.

Golf carts are not available to rent through Spruce Meadows. Personal golf carts or those rented from a third party are permitted.

SMOKING / VAPING / CANNABIS

There is a strict **NO SMOKING OR VAPING** policy in all Spruce Meadows buildings, and within 10 feet of any entrance thereof. Competitors are responsible for the actions of all their staff, owners, trainers, etc. Any person caught smoking in a barn or building, or outside an entrance will be assessed a fine of \$250, applied to the horse's account. Further offences may result in being asked to leave the Tournament grounds and a forfeiture of Tournament fees paid. See FEI Article 1019.2 for FEI regulations. The use of cannabis (including but not limited to smoking) is **STRICTLY PROHIBITED** on the Spruce Meadows grounds.

PETS

All pets must be kept on a leash while on the grounds (FEI Article 109.14). This includes in the barns/stabling compound. Owners are required to clean up after their pets. A \$100 fine will be assessed to those failing to clean up after their animals.

Unleashed pets or those which become a nuisance (that run loose, are aggressive or vicious) anywhere on the grounds, will be taken by our security personnel to a safe area. Release may be obtained after payment of a \$200 fine. Pet owners are responsible for the competition fee(s) of the horse(s) whose performance may be disrupted by their animal. An associated horse account will be billed.

Pets that are aggressive, vicious, or are found by security multiple times, will be banned from the grounds.

WASH RACKS

Warm water wash racks are located south of "K" Barn. To avoid flooding please dispose of any manure deposited in the wash racks. A \$200 fine will be assessed to those who fail to clean up after themselves. Please only use the designated areas for washing your horses. Hoses are not permitted to be left running in the barn aisle.

MANURE DISPOSAL

Each horse will be assessed a manure disposal fee of \$62/horse/week. If bedding is not purchased through Spruce Meadows (min 4 bags/horse/week), the fee is \$100/horse/week.

FARRIER

A farrier will be on call for each of the Tournament days for emergencies. Please obtain the phone number of the farrier on call from the North Meadows Tournament Office.

No farrier other than the official horse show farrier(s) will be permitted to work on the grounds without first being signed in and completing the paperwork at the Tournament Office. Personal farriers will NOT be issued FEI accreditation. Personal farriers and any hot shoeing are only permitted in the designated farrier location. Any person caught hot shoeing in a barn, other building, or outside an entrance will be assessed a fine of \$500, applied to a horse account, and may be asked to leave the Tournament Grounds, and forfeit tournament fees paid as well as any prize money won. Acceptance in future Tournaments will be determined by the Organizing Committee.

LOST & FOUND

The Lost & Found is located in the North Meadows Tournament Office. Items not claimed within one week of the end of the Tournament will be donated. PLEASE KEEP A CLOSE WATCH ON YOUR BELONGINGS!

NATIONAL FEDERATION MEMBERSHIP

All competitors & owners must be members in good standing of their respective National Federation affiliated with the FEI.

All Canadian competitors and owners must have a valid sport license with Equestrian Canada.

AMERICAN COMPETITORS IN EC COMPETITIONS MUST HAVE AN EC NUMBER AND COMPLETE THE MANDATORY SAFE SPORT TRAINING (18+) BEFORE THEY ARE ELIGIBLE TO COMPETE



JUMP LEVY & PHOTOGRAPHY

A Jump Levy of \$25 will be applied to each horse's account for each Tournament week.

Spruce Meadows is pleased to offer competitors complimentary low-res copies of photos for national horses. Horses competing FEI may add photography for a \$50 fee per horse per week.

COMPLETION OF ENTRY FORM

MAIL TO: Spruce Meadows Tournament Office
18011 Spruce Meadows Way SW
Calgary, Alberta T2X 4B7 Canada

EMAIL OR UPLOAD:



EMAIL: tournaments@sprucemeadows.com

(Please attach all documents as .PDF or .JPG files.)



UPLOAD: www.sprucemeadows.com/preorder/
(CODE: **Summer2026**)

ENTRY FORM CHECK LIST:

1. All requested information - including signatures, divisions, payment and membership numbers.
2. Copy of valid coggins test and vaccinations for each horse.
3. **Rider waiver signed BY THE RIDER or parent/legal guardian if the rider is a junior. Trainer signatures will NOT be accepted.**
4. Birth date for Junior competitors.
5. A valid EC Horse Registration number for Canadian owned horses.
6. A current FEI passport number for any horse entered into the FEI divisions or accompanying horse.

Persons responsible MUST be 18+ AND meet the EC definition of a PR.

If your entry form is incomplete (including but not limited to membership numbers, horse/rider information, payment and signatures) your entry will be subject to a \$100 fee, may not be eligible for acceptance and/or late fees may apply.

Competitors are responsible for their own errors and those of their agents in the preparation of their entry forms.

PAYMENT

Payment **MUST ACCOMPANY ENTRIES IN ORDER** for them to be considered valid. Accepted forms of payment are credit card (VISA, MC, AMEX), cheque in Canadian funds, or wire transfer. All stabling, administration, and nomination fees are processed prior to arrival. \$1000 per week will be processed in late April with the balance taken in May. There is a \$15 service charge per horse for credit card payments.

DO NOT SEND CHEQUES DRAWN ON AN AMERICAN BANK ACCOUNT MARKED "PAYABLE IN CANADIAN FUNDS". American cheques for the U.S. Dollar equivalent of your entry fees are acceptable. Please call Spruce Meadows for the exchange rate. If you are planning to wire, please contact Spruce Meadows for the wiring instructions.

RETURNED CHEQUES/DECLINED CREDIT CARDS are subject to a \$100 NSF Fee - COMPETITORS ARE STRONGLY ENCOURAGED TO CONTACT THEIR CREDIT CARD COMPANY TO PRE-APPROVE

PAYMENT. If payment is not included with the entry or multiple attempts are made unsuccessfully to secure payment, the entry will be treated as "late" and a \$600 late charge will be applied to the account. Spruce Meadows reserves the right to return the entry or prohibit from competition any rider/owner whose credit card is declined/cheque returned NSF on one or more occasions.

SPRUCE MEADOWS DOES NOT KEEP CREDIT CARDS ON FILE FROM PREVIOUS TOURNAMENT SERIES. If paying by card, a valid credit card number with expiry date and cardholder signature **MUST** accompany each entry in order for it to be considered valid. Should you prefer to call in a credit card number, **THE SIGNATURE BOX MUST STILL BE SIGNED**. A credit card number must be received by the Tournament Office **BY THE CLOSING DATE**. Credit card numbers received after the closing date will result in the entry being deemed late and therefore late fees will be applied. Spruce Meadows will not call to obtain a credit card number

PAYMENTS WILL NOT BE PROCESSED BEFORE THE CLOSING / DEFINITE DATE.

EQUESTRIAN CANADA NOMINATIONS

1. To be accepted, a horse must be nominated for at least one division and pay the nomination fees for each week the horse is competing. Do **NOT** pay starting fees with your entry form.
2. Competitors have until the deadline each tournament to adjust their nominations. You will be charged a \$150 late fee, in addition to the nomination fee, for any divisions added after this deadline. Nomination fees will **NOT** be refunded if you decide not to compete **AFTER** this deadline.
3. If you wish to compete with your horse in multiple divisions (assuming eligibility), submit the nominating fees for all of the divisions with your entry form.
4. You may nominate as many horses as you wish, however you may only ride a maximum of two (2) horses per competition each day unless otherwise stated.
5. Horses entered in EC divisions are not eligible for FEI divisions at the same Tournament.
6. EC Horses may jump twice per day, if nominated accordingly.
7. Non-competing horses are subject to a \$1,100 fee (plus manure, utilities, and E barn stabling if applicable) per week. Vet notes must be presented to the Tournament Office by 4 p.m. the day before competition begins to be considered for a reduction in fees.

STARTING (DECLARING) FOR COMPETITION

1. Horses must be started (declared) the day before the competition is held, at which time the starting fee is applied to your horse's account.
2. **EC horses started after the specified closing time for declarations will be charged a double start fee, will go 1st in the order unless otherwise specified by the Tournament Office and are subject to approval by the Organizing Committee. Please refer to the Tournament Schedule posted in the Tournament Offices. No horse may be late started into a competition that has already begun.**
3. EC horses which have been started in a competition and are then withdrawn must submit a vet/dr note at least 90



minutes before the start of the competition in order to receive a refund of the start fee.

- If there are multiple competitions in the same division on the same day, the Organizing Committee reserves the right to numerically balance the events.
- Hors concours entries are not permitted.

SECOND RIDER

If you would like a second rider to ride your horse, please ensure that the person has filled out a WAIVER at the North Meadows Office and provided all current membership numbers prior to any competition. No rider will be allowed to enter a ring until this waiver is signed and memberships confirmed. Any entry found in violation of this will be eliminated and prize money revoked, and may be disqualified from the remainder of the tournament.

CLOSING DATE OF EC ENTRIES

- The date and time the Tournament Office receives the entry is final in determining whether it is received on time. It is your responsibility to allow sufficient time for entries to reach the office by **5:00 PM. (Calgary Time)** of the closing date. Entries are NOT considered received if handed in at any location other than the Spruce Meadows Tournament Office.

It is the responsibility of all Competitors/Owners/Agents to call 403-974-4516 and confirm that ALL of their entries have been received in full and are legible. Spruce Meadows is unable to call to confirm receipt. A confirmation at your end does NOT guarantee it was received by Spruce Meadows. Failure to confirm receipt within 1 business day of sending your entries may result in entries being deemed late or unaccepted.

If it is necessary to limit entries, the date received, number of weeks attending and size of group will be taken into consideration in determining acceptance. The OC's decisions are final and confidential.

LATE ENTRIES MAY be accepted from the closing date up to the Monday prior to the start of the Tour, subject to:

- approval of the OC
- stabling availability
- number of entries already received
- payment of a late fee of **\$600 CAD PER HORSE. (Entries will not be permitted to start until this fee has been paid.)**

CANCELLATION OF EC/NON COMPETING ENTRIES

- Spruce Meadows will assess administration charges for cancellation of entries as follows:

CANCELLING ENTRIES	REFUND AMOUNT	Notes
Before closing date	• 100% refund - no payments will have been processed.	Spruce Meadows must receive WRITTEN NOTICE of cancellation via email*

After closing date and up to: May 13 (Summer Series) Aug. 19 ('Masters')	• 100% refund of Nomination/Drug/Levy/Paramedic/Stall fees** • ADMINISTRATION FEES NOT REFUNDED	Spruce Meadows must receive WRITTEN NOTICE of cancellation via email*
After May 13 (Summer Series) or August 19 ('Masters') and up to 7 days before the horse is required to be on the grounds	• 100% of Nomination/Drug/Levy/Paramedic Fees. (50% of above fees, if vet/dr note not received at time of cancellation). • STALL FEES NOT REFUNDED** • ADMINISTRATION FEES NOT REFUNDED	Spruce Meadows must receive either a WRITTEN CERTIFICATE OF DISABILITY FROM A VETERINARIAN or DOCTOR'S NOTE AT THE TIME OF CANCELLATION*
After Above	NO REFUND	N/A

PLEASE REFER TO THE FEI SCHEDULE FOR FEI ENTRIES CANCELLED AFTER THE DEFINITE DATE.

IT IS THE RESPONSIBILITY OF THE OWNER, COMPETITOR, OR AGENT TO CALL THE TOURNAMENT OFFICE, 403.974.4516, AND ENSURE ANY WRITTEN NOTICE HAS BEEN RECEIVED.

***VETERINARIAN OR DOCTOR NOTES THAT ARE:**

- received after the cancellation;
 - improperly dated/not signed
 - not on official Veterinarian/Doctor letterhead;
- WILL NOT BE ACCEPTED.**

**Stall(s) reverts to Spruce Meadows for reassignment. You may not reallocate your stall yourself.

Any refund of fees will be printed as a cheque, and mailed out after the end of the Tournament Series or at the rider's request, may be applied to the outstanding balance of a different horse entered in the tour. COMPETITORS CANCELLING THEIR ENTRIES AFTER THE START OF THE TOURNAMENT, REGARDLESS OF THE REASON, WILL RECEIVE NO REFUND.

Note: Competitors are asked to advise Officials at the Hitching Ring or one of the Tournament Offices immediately when they are scratching from a competition or from the remainder of the Tournament.

SUBSTITUTION OF ENTRY

After the closing date of entries and up to May 13 (August 19 for the 'Masters'), an entry may be substituted for a \$100 fee, provided that the stabling requirements, nominations and entry payment are all the same.

Any substitutions made after May 13 (August 19) will be subject to a \$200 fee. Substitutions after May 22 (August 30) are subject to a **\$400 substitution fee**. Proof of vaccinations, coggins and memberships must accompany all substitutions to be considered. An entry may only be substituted if neither horse has entered either tour/tournament, must replace the same type (i.e. National or FEI) of entry and will replace the entry in its entirety.

All substitutions are subject to approval from the OC. Payments that have already been processed will not be refunded and it is



up to the parties involved in the substitution to handle any billing requirements; a new form of payment may be used on close-out.

Any stall fittings/tack/equipment, etc. left after check-out will be removed and placed in the LOST & FOUND.

STABLING

1. Priority will be given to horse stalls, and as such extra stall availability/assignment may be subject to change—your account will be adjusted accordingly. Please email before arrival to confirm the number of extra stalls.
2. Extra stalls are applied to the horse's account OR to a barn account. We are unable to split stalls onto multiple accounts—please order accordingly.
3. All stalls must be cleaned daily and refuse placed in the designated bins by 8:00 a.m.
4. Stabling will be assigned at the entry deadline based on the 'Stable With' box on the entry form. **Changes made after the closing date may not be able to be accommodated.**
5. **If you do not request stabling during the off week, you do not get to keep the same stall for the 2nd tour.**
6. Do not block aisles or stall doors with decorations or tack trunks, structurally alter stalls in any way, or write on/deface stalls. Damaged caused to any stall, building, equipment, or other property by the rider or one of their employees/associates will be billed accordingly to the horse's account. Cross tying in the barn aisles is not permitted.
7. Any electrical installations and connections must meet all municipal, provincial and government codes. DO NOT OVERWHELM THE CIRCUITS. Violations will be subject to fine, confiscation of equipment or breaker shut-down.
8. No motorized vehicles are permitted in the building. No class 1 flammable liquids are permitted in any barn. Violations of these rules will result in fines and/or being asked to leave the grounds and forfeiture of fees paid/prize monies won.
9. Cooking or any open flame is not permitted in any barn or within 10 feet of a barn door.
10. There are no permanent import quarantine stalls available at Spruce Meadows.
11. **If your horse is coming in to Canada on temporary papers, this must be noted on your entry form and you must contact Spruce Meadows by April 22 (August 4 for the 'Masters') to confirm availability. All horses on temporary import MUST be eligible to stable in FEI.**
12. All stalls are matted.

Every effort is made to accommodate the requested stabling. Stall assignment is subject to many factors including demand, quarantine requirements, distance travelled, and size of barn. Priority will be given to those attending the full series. For these reasons, the OC reserves the right to adjust your stabling request.

Please note on your entry if you would prefer your horses together or separate (if applicable). FEI and accompanying EC horses MAY be able to stable together providing they meet all requirements. FEI stabling priority will be given those horses competing FEI and entered by the definite date(s).

Stall assignments may shift during the circuit after the definite date(s). Horses not staying for the full circuit **MUST ARRIVE AND DEPART BY THE DATES AND TIMES LISTED; NO EXCEPTIONS. ALL HORSES STABLING IN FEI MUST BE CHECKED IN BY THE VET BEFORE ENTERING THE STABLING AREA. Please see FEI schedule for FEI arrival information.**

TOUR	STABLING CHECK-IN no earlier than:	Horses MUST be on the grounds by:	STABLING CHECK-OUT no later than:
'NORTH STAR 1 ('CONTINENTAL' & 'NATIONAL')	Sunday, May 31 2:00 p.m.	Tuesday, June 2 5:00 p.m.	Monday, June 15 8:00 a.m.
'NORTH STAR 2 ('PAN AMERICAN' & 'NORTH AMERICAN')	Sunday June 21 2:00 p.m.	Tuesday June 23 5:00 p.m.	Tuesday, July 7 12:00 p.m.
'MASTERS'	Sunday, Sept. 6 12:00 p.m.	Monday, Sept. 7 5:00 p.m.	Monday, Sept. 14 9:00 a.m.

Early/late arrivals and late departures MAY be accommodated. Extra charges will apply. Early arrivals may not be able to move directly into their competition stalls. Please contact the Tournament Office to request an alternative arrival time.

ARRIVALS & DEPARTURES

1. Horses MUST arrive between 12pm–4pm on Sunday, 9am–12 pm on Monday OR 3pm–5pm on Monday/Tuesday (times subject to change). Please contact the Tournament Office with your preferred arrival time and we will do our best to accommodate. Times are limited on Monday. After hours arrivals are subject to a fee, billed to the horse's account, and may not be accommodated.
2. All horses must have their temperatures taken and recorded upon arrival. Temperature records for the 3 days preceding arrival must be available upon request.
3. All horses stabling in FEI must complete the FEI check in..
4. **All arrivals must email the Tournament Office 48 hours prior to arrival with your ETA.**
5. Due to space limitations, horses not competing for the tour are not able to be accommodated on the grounds. Other stabling in the area is usually available.
6. **Under no circumstances may a horse be placed in a stall to which it has not been assigned. VIOLATION OF THIS RULE WILL RESULT IN A \$250 FINE TO THE HORSE'S ACCOUNT. ANY CHANGES TO HORSE PLACEMENT WITHIN YOUR ASSIGNED AREA MUST BE APPROVED BY THE TOURNAMENT OFFICE.** Competitors must not move from their assigned block of stalls without the permission of the Tournament Office.
7. If your horse is in Canada on temporary papers, it is only allowed at the locations listed on the permit. Spruce Meadows is not responsible for fines/loss of entries if your horse is found in violation of this. No refund of fees is possible. **You must inform Spruce Meadows by April 22 (August 3 for the 'Masters') if you would like to apply for your horse to be in Canada on temporary papers.**
8. Once on the grounds, horses cannot be taken off the grounds until after the completion of their final competition of the Tour and only then if the horse's account is closed (if warranted and feasible from the OC's viewpoint,



special permission may be obtained from the Tournament Office). Unauthorized removal will result in forfeiture of Tournament fees paid and prize money for all entries of the group involved. Acceptance in future Tournaments will be determined by the Organizing Committee.

- Vehicles will not be allowed into the stabling area from the evening prior to the FEI Jog, until at least one hour after the end of the last competition of the Tour. Vehicle access will be limited during the transition week. Please plan your departures accordingly. Horses and/or equipment may be walked out of the stabling area after the account(s) are closed and a release form has been obtained/passport collected.

EC HORSE STALLS/ALL EXTRA STALLS

All horses stabling together MUST select same level.

Stabling	
<p>WEEKLY RATE Check In: 2:00 P.M. Check Out: 8:00 A.M.</p>	<p>Horse Stall: \$700 Extra Stall: \$850 Off Week Stall: \$450</p>
<p>E-BARN <i>Subject to availability. Horses must be eligible for FEI stabling.</i></p>	<p>Horse Stall: \$1,000 Extra Stall: \$1,100 Off Week Stall: \$600 (Summer Tours only)</p>

** Additional nights: \$100 / night / stall, subject to availability
\$110 per horse per week surcharge on any accompanying horse wishing to stable in FEI, subject to availability and eligibility

ACCREDITATION

- Spruce Meadows accreditation is required for access to barns, parking, and various other areas around the grounds. Stabling security is an FEI requirement.
- FEI accreditation will be allotted as follows: Maximum of 2 owners per horse (as listed in the horse's passport), 1 groom per horse, and 1 guest or trainer per rider. Trainers must be listed on the entry form. Canadian coaches must have licensed status. Riders are required to sign in their accredited guests PRIOR to accreditation being issued. NO EXCEPTIONS. If the rider is a junior, the parent/legal guardian must sign.**
- No additional passes will be issued free of charge unless the discarded accreditation has been returned to the North Meadows Tournament Office; please plan accordingly and make sure only those who NEED stable access are accredited. The RIDER/parent/guardian is FULLY RESPONSIBLE for the actions of those accredited under them.
- Additional limited access passes may be available to the rider for \$300, billed to the associated horse account.
- As per FEI Veterinary Regulations (Article 1023), only those permitted treating veterinarians and permitted equine therapists with current FEI registration will be eligible to receive FEI accreditation. Those individuals must still be signed in by a rider and fill out the required paperwork PRIOR to receiving accreditation.
- EC veterinarians, therapists, and all personal farriers are required to be signed in by the respective rider and

the required paperwork must be filled out prior to any treatment. Failure to do this may lead to them being asked to leave the grounds.

PRACTICE AREAS & SCHOOLING HOURS

- Schooling is permitted in designated areas at designated times only. Stewards will be in attendance.
- Schooling times, rules and locations are posted at the Tournament Offices. Practice areas are available for horses stabled on the grounds, commencing Monday of the Tournament week.
- Lunging is only permitted in designated areas.
- FEI Schooling Rules will be in effect at all times in all rings; including the transition week.

RAPPING

AT SPRUCE MEADOWS, RAPPING OF A HORSE IS NOT ALLOWED IN ANY WAY WHATSOEVER AT ANY TIME. VIOLATORS MAY BE DISQUALIFIED FROM THE TOURNAMENT AT THE DISCRETION OF THE GROUND JURY AND ALL PRIZE MONIES WILL BE FORFEITED. IN SUCH CASES, STARTING AND TOURNAMENT FEES WILL NOT BE REFUNDED. FEI ARTICLE 243 WILL APPLY.

TIME SCHEDULES

Please note times and rings listed are TENTATIVE. Finalized times and Orders of Go will be listed in the Daysheet or on the Spruce Meadows website, and available in the Tournament Office after declarations for the competition have closed.

RINGS

RING DIMENSIONS:		
International Ring	178m x 107m	Outdoor—grass
Exercise Rings	89m x 82m	Outdoor—grass
	96m x 64m	Sand Mix
All Canada Ring	225m x 115m	Outdoor—grass
Exercise Ring	98m x 51m	Outdoor—sand mix
North American Ring	162m x 93m	Outdoor—grass
Exercise Ring	71m x 51m	Outdoor—sand mix
Chinook Ring	153m x 74m	Outdoor—grass
Exercise Ring	91m x 83m	Outdoor—sand mix
Orchard Ring	112m x 98m	Outdoor—sand mix
Exercise Ring	76m x 41m	Outdoor—sand mix
Rocky Mountain Ring	101m x 84m	Outdoor—grass
Exercise Ring	66m x 36m	Outdoor—sand mix
All Alberta Ring	101m x 76m	Outdoor—grass
Exercise Ring	68m x 37m	Outdoor—sand mix



TOURNAMENT ATTIRE

Spruce Meadows Tournament competition dress code requires traditional show jumping attire (FEI Article 256). In the case of inclement weather, the Competitions Manager will make the call in regards to rain gear.

It is compulsory for all persons to wear a properly fastened protective headgear at all times when mounted (FEI Article 207.1.1) any time on the Spruce Meadows grounds

A maximum of one earphone/bud may be worn while mounted on a horse anywhere on the grounds.

TOURNAMENT AREA CONDUCT

1. No persons other than the Officials, Stewards, and Staff on duty may enter the competitive ring without the permission of the Competitions Manager or the Organizing Committee.
2. 'Salute' markers, such as clocks, may be moved at any time during the competition and riders should stay alert to the Gate person's instructions.
3. The Competitions Manager may determine to pre-load or not pre-load at any time during the competition—this same procedure is used when competitions are televised.
4. Coaches, riders, trainers, and grooms who enter the Competitive Ring must look **NEAT AND BE SUITABLY ATTIRED** in the opinion of Officials. (FEI Article 207)
5. **ONLY RIDERS ENTERED IN THE SPECIFIC COMPETITION AND THEIR COACH OR TRAINER MAY WALK THE COURSE. NO DOGS ARE PERMITTED ON THE RING.**
6. Horses wearing coolers are not allowed in the Competitive Ring unless authorized.
7. Competition scoring may change from what is printed based on a number of factors including but not limited to number of entries and weather conditions.
8. Persons are only allowed in the Competitive Ring when competing or when the course is clearly marked 'OPEN'
9. No helmet cameras of any kind are permitted to be worn..

PRESENTATIONS

1. Competitors must be mounted when entering the Competitive Ring for presentations.
2. Winners of each competition to a maximum of twelve must be present for the competition awards. **PLEASE ANTICIPATE IN ADVANCE THE NEED TO RIDE IN FOR YOUR PRESENTATION ON A WELL-MANNERED HORSE.** Your Cavalier's Salute to the sponsor's representatives during the Victory Gallop is your way of thanking them. Failure to appear for presentations will result in forfeiture of prize monies won.
3. Participation in parades and special awards for requested winners/FEI riders is mandatory. Please plan accordingly.
4. Parade/presentation horses are not available through Spruce Meadows.
5. Winners of championships and/or other awards must be present for the Award Presentations. Competitors who do not comply will forfeit their prizes.

FALLS, ACCIDENTS & RETURN TO PLAY

In the event a concussion is reasonably suspected, a competitor must receive medical clearance from the medical personnel on duty before being allowed to return to competition. It is up to the competitor to receive said clearance. Refusal to be evaluated by the medical personnel on-site will lead to disqualification from the Tournament. Fees will not be refunded in such cases. Please see Equestrian Canada Article A101 for further details.

In the event of a fall by a horse or rider anywhere on Spruce Meadows property, they must be cleared by medical personnel/veterinarian prior to competition. (FEI Article 248.2)

ORDER OF GO

1. The Order of Go will be drawn for the first day. Thereafter the order will be by rotational draw unless otherwise specified. The order will be posted in the Tournament Offices and on the Spruce Meadows website (www.sprucemeadows.com) after 10:00 P.M. the day before each competition is held.
2. FEI Article 276.1.1. will apply for competitors going consecutively in the same competition.
3. Special or unforeseen circumstances will be dealt with by the Organizing Committee or Ground Jury on a case-by-case basis.
4. If a rider has two horses in a jump-off, the rider will have the option of moving up in the order or be prepared to go back into the ring without a warm-up for the second horse.
5. In competitions with Immediate Jump-Offs, FEI Article 218.15 will apply.
6. **COMPETITORS WHO HAVE MISSED THEIR COMPETITION WILL NOT BE REFUNDED.**

TIES

All ties in jumper competitions will be broken on the basis of time in accordance with FEI Rules. In consultation and agreement with the Ground Jury and Organizing Committee, ties will be broken in any jump-off on the basis of time to 100ths of a second. Competitions under Table A, Article 220.2.1.1 One Round: should there be equality of faults and time after the first round for first place only, there will be one jump-off against the clock.

RIDER'S MEETINGS

Rider's meetings, chaired by the President of Spruce Meadows or a member of the OC are held on an as needed basis. **We STRONGLY recommend attendance by all competitors.**

PROTESTS

Protests shall be handled in accordance to FEI rules. Feel free to bring your unofficial concerns to the Competitions Manager for consideration.

PRIZE MONEY

All prize money will be listed and paid in CANADIAN FUNDS. Prize money is applied directly to the horse's account. Any credit at the end of the Tour will be paid by cheque or wire drawn to the order of the rider/owner **as indicated on the entry form** and will be paid out following the horse's final competition, when the account is closed. Cheques can only be made when there is a credit balance on any given horse account.



There is a \$25 fee for all outgoing wires.

Please note that Championship awards will be paid directly to the horse account or the rider, and cannot be paid until after the last competition on Sunday, when the account can then be closed.

PLEASE REVIEW INSTRUCTIONS ON THE ENTRY FORM AND COMPLETE ALL INFORMATION TO ALLOW US TO PROCESS CHEQUES CORRECTLY. WE ARE UNABLE TO ADJUST TO WHOM THE PRIZE MONEY IS PAID AFTER THE START OF THE TOURNAMENT.

Competitors/owners are responsible for providing correct wiring information. Spruce Meadows is not responsible for misdirected wires due to inaccurate/illegible/incomplete information.

WITHHOLDING TAX & FOREIGN OWNERSHIP

The Revenue Canada Tax Department requires that in the payment of funds to non-resident competitors and/or horses owned (in whole or in part) by non-residents of Canada, 15% of each payment must be withheld and submitted to the Tax Department. A T4A-NR form will be mailed from Spruce Meadows by February 28, 2027 so that it can be included in your 2026 Canadian tax return.

Ownership information listed in the passport or registration (and therefore registered with the appropriate Federation) is considered correct. If there are any issues with, or corrections to, the address/ownership shown in your horse's passport, you must bring these to the attention of the Tournament Secretary for a ruling by the OC before the start of the Tour to exempt you from Withholding Tax.

CLOSING YOUR ACCOUNTS

After your horse's final competition, please close your account via the Rider Portal or in person at the Tournament Office. If you are using a different form of payment than listed on the entry form, bring it with you at the time of close out. Once your account has been closed, you will receive your horse passport/security release form.

Any outstanding accounts must be cleared within 2 days of the end of the Tour— failure to close your accounts in a timely manner may impact your ability to enter future Tournaments.

Accounts not closed within two days of the end of the Tournament will be assessed a fine of **\$100** and will be closed using the form of payment on the original entry. By closing your account you or your agent/representative are confirming the accuracy of said account. We regret no further adjustments can be made.

All financial matters pertaining to the North Star Tour 1 will be closed by June 17, 2026. All financial matters pertaining to the North Star Tour 2 will be closed by July 8, 2026. All financial matters pertaining to the 'Masters' will be closed by September 17, 2026

ORGANIZING COMMITTEE DECISIONS

1. IT IS IMPORTANT TO UNDERSTAND THAT INTERPRETATIONS OF EXISTING RULES AND REGULATIONS AND THE INVOKING OF ADDITIONAL RULES AND REGULATIONS TO COVER UNFORESEEN CIRCUMSTANCES ARE THE SOLE RESPONSIBILITY AND AUTHORITY OF THE ORGANIZING COMMITTEE, AFTER CONSULTATION WITH THE GROUND JURY. ALL OWNERS, TRAINERS, COMPETITORS AND GROOMS AGREE TO THE

ACCEPTANCE OF THESE INTERPRETATIONS AND ADDITIONAL RULINGS BY VIRTUE OF YOUR SIGNED ENTRY.

- It is the objective of the Organizing Committee to run the Spruce Meadows Tournaments at the highest possible level of sportsmanship. Judges, Course Designers, and Technical Delegates have been selected by the FEI and the Organizing Committee based on their knowledge and experience. Their decisions with respect to the competitions are their own responsibility.
- The Organizing Committee reserves the right to hold a qualifying round for any competition where the number of horses entered is excessive. In the unlikely event that a competition has less than 15 horses entered, the competition may be cancelled and start fees refunded.
- Competitions may be split or phased at the discretion of the Organizing Committee.
- The Steward(s) and those designated as Assistant Stewards (complete listing available on request from the Tournament Secretary) shall have full power to act for and on behalf of the Organizing Committee during the Tournament. The Organizing Committee is not bound by opinions of its Staff, such as Veterinary Doctors, Tournament Office and Field Staff, in the interpretation of these rules. In the International Divisions, the Stewards must consult with the Ground Jury in case of infractions before submitting to the Organizing Committee.
- Spruce Meadows is dedicated to the historical traditions of show jumping with turf and natural obstacles. Please be advised that these obstacles can be used at the discretion of the course designers in any of the competitions.

EXCUSING OR DISQUALIFYING

- Any act of discourtesy or disobedience to the judges, officials, volunteers, or staff, as determined by the Organizing Committee, may result in disqualification. Such unacceptable behaviour may result in forfeiture of Tournament fees paid and prize money, and acceptance in future Tournaments may be determined by the Organizing Committee.
- The Organizing Committee reserves the right to remove any groom, trainer, rider, parent, manager or owner or ALL of a related group from the Tournament without being liable for compensation.
- Inhumane treatment of a horse on the grounds is forbidden and, if a violation occurs, the Organizing Committee along with the Ground Jury or Appeal Committee for the International Division, has the right to disqualify the Competitor from the Tournament. Such unacceptable treatment will result in forfeiture of Tournament fees paid and any prize money won, and acceptance in future Tournaments will be determined by the Organizing Committee. Refer to Welfare of the Horse, Code of Conduct, Ethic Committee, FEI Nov. 1990.
- Judges have the discretion to eliminate a competitor after a sufficient number of penalties have been incurred which prevent the athlete from qualifying for the final placings.
- Horse numbers must be worn by horses at all times when outside of their assigned stall. The use of a wrong number**



or having no number may result in disqualification from the competition or tournament, and a \$100 fine.

6. In the case of a horse(s) being disqualified, the winner of the next succeeding prize shall take the prize that had been awarded to the disqualified horse(s) and the other prizes will be adjusted accordingly.

CODE OF CONDUCT

Spruce Meadows is committed to the highest of standards of behaviour and the sport of show jumping and expects the same standards, conduct and behaviour from its athletes and their associates.

Disrespect of these standards towards the Spruce Meadows employees, officials, volunteers, paramedics, or athletes will not be tolerated and may result in the disqualification of horse and rider; all prize money won and monies paid will be forfeited. There will be no appeals on these types of Organizing Committee/Ground Jury decisions.

In the event medical care is required by an individual on Spruce Meadows property, the Paramedics on site have been contracted and authorized by Spruce Meadows Ltd to provide immediate care and have the authority to make decisions in this capacity, including but not limited to: level of care and transportation method to the appropriate treatment facility, should it be deemed necessary.

NOTE CAREFULLY: Extremes of dress and social behaviour on the part of athletes, trainers, owners, or associates are not welcome at Spruce Meadows. At its sole discretion, the Organizing Committee will insist on such individuals leaving the Tournament grounds. Your enthusiasm for high personal standards and adoption of the highest of standards can be your real and meaningful way of supporting and saying thank you to Spruce Meadows.

Wilful damage of property is strictly prohibited and grounds for expulsion from the facility.

All the people of Spruce Meadows; our professional staff, officials, technicians, our sponsors, the media, and our fans are dedicated to you and will make every effort to ensure safe, quality competitions and facilities.

Spruce Meadows reserves the right to suspend or permanently remove any individual from the grounds for a single egregious act or for escalating behaviours that are contradictory to the Spruce Meadows Code of Conduct. BY ENTERING THE TOURNAMENT YOU ARE ACCEPTING ALL THE RULES AND REGULATIONS INCLUDING THE CODE OF CONDUCT.

RECOGNITION OF MEDIA, INTELLECTUAL PROPERTY AND SPONSORSHIP RIGHTS

All riders, owners and related associates grant to Spruce Meadows the irrevocable, perpetual and unrestricted rights to take, record, modify, publish, license, sell, assign, and use photographic images and audio and audio-visual recordings of themselves, their horse(s), their competitive performance(s) and practice(s), while on or near Spruce Meadows property; this includes, without limitation, uses which are for commercial, non-commercial, training, public-interest or other purposes, and images or recordings whether alone or in compilation with other materials, edited or enhanced, cropped or otherwise altered, and whether by Spruce Meadows or its agents, representatives,

associates, licensees, or assignees.

All riders, owners and related associates acknowledge and agree not to contest that copyright and every such image and recording is the property of Spruce Meadows (or those claiming under Spruce Meadows, as the case may be). All riders, owners and related associates consent to the behaviours associated with the exercise of the rights detailed above and acknowledge that they are not alone a violation of any right of privacy or protection of personal information.

Riders, owners and all related associates may wish to utilize a variety of audio-video recording equipment on their horse(s), equipment or tack, helmets, or persons in order to take video or still recordings of their competitive rides. There is concern that such equipment may alter the performance of safety equipment or pose a safety problem for rider or horse, or may interfere with the operation of timing and communications equipment and systems associated with running events.

In addition, the equipment may not be suitable for accepted federation dress or equipment codes or rider or horse appearance or welfare when in competition. Further, its use may be in breach of existing licensing, commercial and or sponsorship arrangements. Spruce Meadows reserves the right to require any rider to remove such equipment prior to permitting that rider to enter a competition ring or practice ring, and by seeking to enter a tournament or practice ring, you agree to this restriction.

Spruce Meadows recognizes that personal recording of videos takes place on Spruce Meadows property during and around Events, and generally speaking, allows such recordings to take place for personal, non commercial use. It is also recognized that individuals, for personal and non-commercial purposes, may wish to post or share their videos on the internet and in other social media, which is permissible under certain terms and conditions.

For clarity, and for the avoidance of doubt, the rider, owner or appointed representative agrees not to transmit, or facilitate transmission, of any account, description, picture, or reproduction of any Spruce Meadows event in violation of licensing, sponsorship, Federation or Code of Conduct rules and regulations.

LIABILITY

FORCE MAJEURE

Spruce Meadows shall not be liable for any damages or loss or otherwise for any variation, cancellation or postponement of any tournament or event, in whole or in part, caused directly or indirectly by or in consequence of any force majeure event including fire, storm, dangerous weather condition, war, insurrection, riot, civil commotion, strike, epidemic, pandemic, or by any other cause whatsoever beyond the control of Spruce Meadows whether similar to or dissimilar from the causes enumerated herein.

ACKNOWLEDGEMENT AND ASSUMPTION OF RISK

The competitor understands that all equestrian sports involve inherent risks and dangers including risk of serious personal injury, damage, harm, loss, pain and suffering, permanent disability or even death. Such risks may result from the competitor's actions or omissions, the actions or omissions of others, environmental conditions, the condition of the premises, or by the inherent hazards of the events the competitor



is participating in. The competitor agrees to immediately discontinue any activity if the competitor believes at any time that the conditions are unsafe.

The competitor fully understands and assumes these risks and dangers and accepts sole responsibility for any personal or property injury, damage, harm, loss, pain or suffering or even death. The competitor further affirms that (s)he is physically and mentally capable of participating in the events chosen.

WAIVER OF LIABILITY AND INDEMNIFICATION

Spruce Meadows assumes no responsibility whatsoever for any personal property, including animals, brought or placed on the premises and the owner and competitor agree that Spruce Meadows is expressly released and discharged from any and all liability from any loss or damage relating to such property.

The owner and competitor agree, jointly and severally, to hold harmless, release and discharge Spruce Meadows from all liability and waive all claims, demands and actions against Spruce Meadows and each of its directors, officers, employees, agents, representatives and volunteers, for all personal or property injury, damage, harm, loss or costs whatsoever (including as may arise from the negligence of Spruce Meadows or any of its directors, officers, employees, agents, representatives or volunteers) which is sustained by the owner, the competitor or any of their employees, agents, representatives, or assigns while on the premises or relating in any way to the participation of the owner or competitor in this tournament, including transportation to and from the tournament.

The owner and competitor are jointly and severally responsible for all injury, damage, harm, loss or cost to any third party caused by the owner, competitor, or any of their employees, agents, representatives, assigns, or any of their horses or other animals brought on the premises. The owner and competitor assume full liability for and shall fully defend, indemnify (including payment of all legal fees, costs and disbursements) and hold harmless Spruce Meadows and each of its directors, officers, employees, agents, representatives and volunteers, from all claims, demands and actions brought by any person which is in any way caused by the owner, the competitor or any of their employees, agents, representatives or assigns, or any of their horses or other animals.

The owner and competitor are required to secure third-party insurance providing full coverage for participation in equestrian events at home and abroad, and to keep that policy updated.

PHOTOGRAPHIC/VIDEO IMAGE RELEASE.

The competitor understands that Spruce Meadows will be gathering photographic and video images and recordings during this event, which images and recordings may include the competitor. The competitor agrees that those images and recordings are the sole and exclusive property of Spruce Meadows and hereby consent to Spruce Meadow's release and reproduction of all photographic and video images, recordings and likenesses taken during its events for future promotional or commercial purposes, without any notice or compensation to the competitor.

CONSENT TO RECEIVE MEDICAL CARE

The competitor hereby consents to receive any medical care and treatment that may be deemed advisable in the event the competitor sustains an injury or illness while participating in the tournament. The competitor authorizes and voluntarily consents to the release and disclosure of personal health information by a physician, hospital, emergency medical technical or Spruce Meadows for the purposes of diagnosing or providing treatment, for payment of any medical care or treatment, or for

coordination of care. The competitor understands and agrees that (s)he is solely responsible for and will assume liability for all costs for medical care and treatment and will indemnify and hold harmless Spruce Meadows from all liability for such costs

It is the responsibility of the competitor to complete and/or submit any EC/FEI/WADA medical treatment/exemption paperwork if/as required due to treatment.

BORDER CROSSING / INTERNATIONAL TRAVEL

Spruce Meadows advises all International competitors, especially those trucking, to check with the relevant border authorities (i.e. Canadian Border Services and the Canadian Food Inspection Agency) prior to arrival at the Canadian border. Customs requires that all horses possess a health certificate issued by the official government veterinarian of the country of origin and have an import permit for entry into Canada. Conditions for entry of horses to Canada are as per Canadian government regulations.

All horses are required by Canadian Food Inspection Agency to have an import permit issued by the Minister of Agriculture of Canada (www.inspection.gc.ca).

Please call the Canadian Food Inspection Agency at (587) 230-2468 for more information.

Commercial carriers entering Canada are advised to be aware of the eManifest requirements prior to arriving at the border. Information regarding the eManifest can be found on the CBSA website (<http://www.cbsa-asfc.gc.ca/prog/manif/menu-eng.html>). Please contact CBSA directly with any questions pertaining to the eManifest.

Many travellers to Canada now require an Electronic Travel Authorization (eTA) to enter Canada. Please check the Government of Canada website (<http://www.cic.gc.ca/english/visit/eta.asp>) for details and to apply. This is generally a quick process, however please DO NOT leave this until the last minute as Spruce Meadows is unable to assist with late applications.

For departure from Canada and in order to reduce the wait, at the Sweetgrass Border Crossing.

Please request an appointment **well in advance** (not the night before) of your departure. Wait times can be very long.

Horses travelling to the USA within 60 days of arriving from Europe may require additional testing and paperwork to cross the US border. Please plan accordingly.

There is no permanent or returning import quarantine available at Spruce Meadows. Limited temporary import quarantine may be available. You must inform Spruce Meadows by April 22 if you are considering temporary import. Any horse coming in on a temporary import permit MUST be eligible to stable in FEI, and must return directly to its country of origin or to another venue as listed on the import permit. Temporary import horses from Europe must arrive on June 1, June 15 or June 22 and depart by July 6.

Export blood cannot be drawn at Spruce Meadows. Please take that in to consideration when making your travel plans.



Landon Closson (CAN)



Payton Roux (CAN) & Laurel Walker (USA)



Lauren Van Steenis (CAN)



George Balderston (CAN)



Darby Cook (CAN) & Lukene Arenas Saravia (GUA)



Bella Crysdale (CAN) & Sam Powell (CAN)



Arielle Allen (IRL)



Morgan Quinton (CAN)



Emmeline Adamick (USA) & Nolan Taylor More (CAN)



Adelaide Toensing (USA)

2026 Linda Southern-Heathcott Horsemanship Scholarship

PRESENTED BY **DUNCAN ROSS**

The 2026 Linda Southern-Heathcott Horsemanship Scholarship, presented by Duncan Ross, celebrates young equestrians who embody the true spirit of horsemanship—not only in the competition ring, but in their daily dedication to the care, responsibility, and partnership with the horse.

Throughout the 2026 season at Spruce Meadows, during the 'Continental', 'National', 'Pan American', and 'North American' Tournaments, an independent jury will identify and assess athletes who demonstrate the heart, mindset, character, and commitment that define exceptional horsemanship.

Recipients of this scholarship distinguish themselves through a deep respect for their equine partners, a strong work ethic behind the scenes, and a genuine passion for the journey required to achieve excellence in the sport.

At each tournament, one athlete will be awarded the Linda Southern-Heathcott Horsemanship Scholarship, presented by Duncan Ross, receiving \$5,000 to support their continued development in horse sport and their ongoing commitment to horsemanship. As Winston Churchill once said, *"There is something about the outside of a horse that's good for the inside of a person."*

Pictured above: our 2025 Linda Southern Heathcott Scholarship recipients

LEARN MORE AT
[SPRUCEMEADOWS.COM/SCHOLARSHIP](https://sprucemeadows.com/scholarship)



SPRUCE MEADOWS



RULES & REGULATIONS

FEI SANCTIONED DIVISIONS AT:

CSI 5*/2*	'CONTINENTAL'
CSI 5*/2*	'NATIONAL'
CSI 5*/2*	'PAN AMERICAN'
CSI 5*/2*	'NORTH AMERICAN'
CSIO 5*/ CSI 2*	'MASTERS'

*FEI sections pending final approval of the FEI Schedule. Please see FEI Schedule for complete details.

GENERAL RULES & REGULATIONS

- The Spruce Meadows 'Continental', National, 'Pan American', 'North American' & 'Masters' Tournaments are official International Events which have been authorized by the Fédération Equestre Internationale and will be conducted in accordance with the current FEI statues, rules, and regulations. The horse show grounds are governed by the laws of Canada.
- Protests shall be handled according to FEI protocols.
- The Revenue Canada Tax Department requires that in the payment of funds to non-resident competitors and/or horses owned (in whole or in part) by non-residents of Canada, 15% of each payment must be withheld and submitted to the Tax Department. A T4A-NR form will be mailed from Spruce Meadows by February 28, 2027 so that it can be included in your 2026 Canadian tax return.
- Ownership information listed in the passport (and therefore registered with the appropriate Federation) is considered correct. If there are any issues with, or corrections to, the address/ownership shown in your horse's passport, you must bring these to the attention of the Tournament Office for a ruling by the Organizing Committee by the start of the Tour to exempt you from Withholding Tax.**
- In exceptional circumstances, together with the approval of the Ground Jury, the Organizing Committee reserves the right to modify the Tournament Schedule in order to clarify any matters or matters arising from an omission or due to unforeseen circumstances. Any such changes will be communicated as soon as possible and they will be reported to the FEI.
- Participation in parades and special awards on the Saturday and Sunday (if applicable) is mandatory for all FEI Riders. Parade/presentation horses are not available through Spruce Meadows.
- Competitors are responsible to the Ground Jury on entering the competitive ring.
- Horses may only jump/declare once per day.
- Horses dropping out of FEI after the definite date and still attending the tournament will be charged the \$850 FEI fee in addition to any applicable tournament fees (e.g. stabling, nominations, late fees).

RING DIMENSIONS:

RING DIMENSIONS:		
International Ring	178m x 107m	Outdoor—grass
Exercise Rings	89m x 82m	Outdoor—grass
	96m x 64m	Sand Mix
Meadows on the Green Ring	117m x 116m	Outdoor—grass
Exercise Ring	63m x 58m	Outdoor—sand mix
Exercise Ring	15m x 30m	Outdoor—grass
All Canada Ring	214m x 114m	Outdoor—grass
Exercise Ring	98m x 51m	Outdoor—sand mix
North American Ring	162m x 93m	Outdoor—grass
Exercise Ring	71m x 51m	Outdoor—sand mix
Chinook Ring	153m x 74m	Outdoor—grass
Exercise Ring	91m x 83m	Outdoor—sand mix
Orchard Ring	112m x 98m	Outdoor—sand mix
Exercise Ring	76m x 41m	Outdoor—sand mix
Rocky Mountain Ring	101m x 84m	Outdoor—grass
Exercise Ring	66m x 36m	Outdoor—sand mix
All Alberta Ring	101m x 76m	Outdoor—grass
Exercise Ring	68m x 37m	Outdoor—sand mix

EQUINE INFLUENZA

All horses participating in FEI events must be vaccinated against Equine Influenza, according to the following minimum protocol (FEI Veterinary Regulations Article 1003). Vaccinations must also be entered in the FEI app. It is requested horses also be vaccinated for EHV within the last 6 months. If an FEI competition horse does not have proof of EHV vaccination, their movements throughout the grounds will be limited, and



there will be no option for them to drop out of FEI and compete nationally.

GRAND PRIX QUALIFICATIONS

The Pre-Qualified Riders List for Grand Prix Competitions can be obtained from the FEI.

SAMPLING OF PROHIBITED SUBSTANCES

Sampling will take place according to EADCMR and FEI rules.

EQUINE ANTI-DOPING & CONTROLLED MEDICATION REGULATIONS

ALL HORSES ARE SUBJECT TO DRUG TESTING AND ALL COMPETITORS AGREE THAT BY MAKING THEIR ENTRY THEY WILL ALLOW THEIR HORSES TO BE SO TESTED.

As per EC, an equine drug testing fee of \$50 per horse per tournament will be charged

HUMAN DOPING CONTROL

All competitors are subject to drug testing and all competitors agree that by making their entries they will allow themselves to be so tested. The Testing Program will be carried out by the World Anti-Doping Agency (W.A.D.A.) in accordance with the agreements between the FEI and W.A.D.A., and FEI General Rules & Regulations. At Spruce Meadows all drugs deemed to be prohibited under FEI rules will not be tolerated.

Situations where competitors, or others connected with the competitors, are found on the Tournament grounds to be suspected of criminal activities or in possession of illegal substances, as defined by the Criminal Code of Canada, will be reported to the appropriate law enforcement authorities.

EXERCISE AREA & HITCHING RING RULES

SPRUCE MEADOWS APPLIES THE FEI RULES – FOR ALL COMPETITIONS IN ALL RINGS AT ALL TOURNAMENTS THROUGHOUT THE YEAR. This has been agreed upon in cooperation with Equestrian Canada. The fences provided may be jumped only in the direction flagged. No part of the practice obstacles may be held by anyone. The obstacles in the hitching ring may not exceed 1.80m in width and 1.65m in height.

UNAUTHORIZED SCHOOLING MAY, AT THE DISCRETION OF THE GROUND JURY, RESULT IN FORFEITURE OF TOURNAMENT FEES PAID AND PRIZE MONEY FOR ALL ENTRIES OF THE OWNER, TRAINER, COMPETITOR, GROOMS AND GROUP INVOLVED. ACCEPTANCE IN FUTURE TOURNAMENTS WILL BE DETERMINED BY THE ORGANIZING COMMITTEE, WITH THE EXCEPTION OF THE CSIO TEAM MEMBERS.

ONCE HORSES ARE IN THE FEI HITCHING RING AREA FOR ANY GIVEN FEI COMPETITION, THEY MAY NOT LEAVE AND RETURN FOR THE COMPETITION WITHOUT THE CONSENT OF THE STEWARDS ON DUTY.

FEI RIDERS

YOU MUST BE ENTERED IN THE FEI ENTRY SYSTEM BY THE DEFINITE DAY FOR EACH TOURNAMENT IN ORDER TO BE ELIGIBLE TO COMPETE.

TOURNAMENT	DEFINITE DATE
NORTH STAR TOUR 1 <i>'CONTINENTAL' & 'NATIONAL'</i>	Friday, April 24
'NORTH STAR TOUR 2 <i>'PAN AMERICAN' & 'NORTH AMERICAN'</i>	Friday, May 15
'MASTERS'	Friday, August 14

Please contact your Federation to ensure you are entered properly by the deadline. As per FEI Article 116, all FEI entries must be made through the FEI entry system, no exceptions.

CANADIAN ATHLETES: Spruce Meadows will enter you into the FEI entry system based on your received entries. Please submit your entries no later than April 15 (August 12 for the 'Masters') to ensure they are correct in the FEI entry system by the definite date.

FOREIGN ATHLETES wishing for an invitation - Please submit your entries by April 15 (August 12 for the 'Masters').

ALL FOREIGN ATHLETES MUST ENSURE THEIR FEDERATION HAS CORRECTLY ENTERED THEM VIA THE FEI ENTRY SYSTEM BY THE DEFINITE DATE EACH WEEK. Entering only via Spruce Meadows does not guarantee acceptance.

Bugle Forklift Sales & Rentals Ltd.

Golf Cart Rentals

Your OEM Club Car Dealer

2 Pass | 4 Pass | 6 Pass | Utility Cart

FROM \$95 A DAY

105, 4919 - 72 Ave SE | 403-243-4152

bugleforklift.com



Music BINGO

EVERY THURSDAY | 9PM

Get ready to stamp your bingo cards & win amazing prizes. It's All day Happy Hour with food & drinks starting at \$5

KARAOKE

EVERY FRIDAY | 9PM

Sing your heart out to your favourite songs and win prizes

AFTER PARTY

SUNDAY
9PM - CLOSE

Hudsons Pub Shawnessy 16061 Macleod Trl SE



Where Champions **STAY & PLAY**



BOOK YOUR STAY
GREYEAGLERESORTANDCASINO.CA

**LUXURY ACCOMODATIONS | SIGNATURE DINING | LIVE ENTERTAINMENT | CASINO
ONLY MINUTES FROM SPRUCE MEADOWS!**



EQUESTRIAN CANADA ÉQUESTRE

RULES & REGULATIONS

Recognized Platinum/Gold Member Tournaments of EQUESTRIAN CANADA

c/o House of Sport
2451 Riverside Drive, Ottawa, ON K1H 7X7
Tel: 866.282.8395 | Fax: 613.248.3484 | equestrian.ca

BIRTH DATE

1. Riders who have not reached their 18th birthday as of January 1st of the current year, are classified as JUNIORS.
2. All Juniors must state their birth date on the entry form, and birth certificates are to be made available upon request

HORSE REGISTRATION

1. A current EQUESTRIAN CANADA Horse Registration is mandatory for all Canadian-owned horses / ponies. Foreign-owned horses should have a passport issued by the FEI, or provide written certification of eligibility (Affidavit) at the Tournament Office upon arrival.
2. **By signing the entry form, competitors, parents, persons responsible are testifying that the entry is eligible for the competitions entered. Subsequent determination that such is not the case will result in elimination.**
3. Proof of current Horse Registration OR a completed affidavit must be turned in to the Tournament Office before the horse will be allowed to compete.

DRUG INSPECTION

1. All competitors and all horses are subject to drug testing. All competitors agree that by making their entry they will allow themselves and their horses to be so tested.
2. Any horse entered in any competition may be selected for equine medication control testing while at the event location (as per article A602.5).
3. Competitors will be assessed a drug fee of \$8 CAD per horse per tournament.

EXERCISE AREA & HITCHING RING RULES

1. **Spruce Meadows applies the FEI rules for all competitions in all rings at all tournaments throughout the year.** This has been agreed upon in cooperation with Equestrian Canada.
2. Unauthorized schooling will result in forfeiture of tournament fees paid and prize money for all entries of the owner, trainer, competitor, groom and group involved. Acceptance in future tournaments will be determined by the Organizing Committee.

JUNIORS RIDING STALLIONS

Juniors aged 16 and above may ride manageable stallions in Jumper competitions. A stallion ridden by a Junior must be accompanied at all times by a competent adult/handler/person responsible. Decisions regarding the manageability of stallions are at the discretion of the judge or steward. Unmanageable stallions must be excused from the ring and/or warm-up ring. (Article G105)

NATIONAL FEDERATION MEMBERSHIP

1. Gold level memberships are required for all Canadian riders and owners competing in EC divisions.
2. **ALL AMERICAN RIDERS MUST HAVE AN EC MEMBERSHIP AND HAVE COMPLETED THE MANDATORY SAFE SPORT TRAINING TO BE ELIGIBLE TO COMPETE.** There is no cost to the membership providing you are a current member in good standing with USEF.
3. Every entry at an EC-sanctioned competition shall constitute an agreement by the person responsible that the owner, lessee, trainer, manager, agent, coach, driver or rider and horse shall be subject to the EC constitution and all rules of EC and any additional rules set by the competition. It is the responsibility of all individuals participating in any capacity in EC-sanctioned competitions


EQUESTRIAN CANADA STATEMENT OF PRINCIPLES - HORSE WELFARE

1. EC requires adherence to humane treatment of horses in all activities under its jurisdiction.
2. All participants shall be bound by the Horse Welfare Code of Conduct.
3. Section A Horse Welfare rules apply to all disciplines and all Section Rule Books. Rule exceptions in other Sections that contravene Section A Horse Welfare rules are not permitted and will not be approved.
4. EC is committed to:
 - a. Upholding the welfare of the horse, regardless of monetary value, as a primary consideration in all activities;
 - b. requiring that horses be treated with kindness, respect, and the compassion that they deserve, and that they never be subjected to maltreatment;
 - c. ensuring that owners, trainers, and exhibitors and their agents exercise appropriate care and responsibility in the handling, treatment, and transportation of their horses, as well as horses placed in their care for any purpose;
 - d. providing for the continuous wellbeing of the horse by encouraging routine inspection and consultation with health care professionals and competition officials to achieve the highest possible standards of nutrition, health, comfort and safety;
 - e. continuing to support scientific studies on equine health and welfare;
 - f. requiring owners, trainers, and exhibitors to know and follow their sanctioning organization's rules, and to work within industry regulations in all equestrian competitions; and
 - g. reviewing, revising, and developing competition rules and regulations that protect the welfare of the horse.

EQUESTRIAN CANADA PRIZE MONEY BREAKDOWN

MONIES ARE LISTED AND PAID IN \$(CAD)

Stable plaques for the first 3 horses and a cooler for the winner will be awarded in certain competitions. Ribbons to 6th up to 12th. Please see Hitching Ring on day of competition for placings.

	1 st	2 nd	3 rd	4 th	5 th	6 th	7 th	8 th	9 th	10 th	11 th	12 th	13 th -20 th
\$125,000 (Derby)	\$35,000	\$25,000	\$15,000	\$10,000	\$7,500	\$6,500	\$5,000	\$3,500	\$2,500	\$2,000	\$1,800	\$1,600	\$1,200
\$25,000	\$7,500	\$4,500	\$3,000	\$2,500	\$1,800	\$1,300	\$1,200	\$1,000	\$700	\$550	\$475	\$475	
\$20,000	\$5,700	\$4,000	\$2,500	\$1,700	\$1,300	\$1,100	\$950	\$775	\$625	\$500	\$425	\$425	
\$15,000	\$4,500	\$3,000	\$2,250	\$1,500	\$1,100	\$700	\$575	\$500	\$500	\$375			
\$10,000	\$3,000	\$2,000	\$1,500	\$1,000	\$700	\$475	\$375	\$325	\$325	\$300			
\$7,500	\$1,750	\$1,150	\$900	\$750	\$650	\$600	\$550	\$500	\$375	\$275			
\$5,000	\$1,500	\$1,100	\$950	\$750	\$450	\$250							
\$2,500	\$800	\$600	\$375	\$300	\$250	\$175							
\$2,000	\$600	\$445	\$330	\$275	\$200	\$150							
\$1,500	\$400	\$325	\$275	\$200	\$175	\$125							




Film Logic
CANADA

The Path To Greatness Is Lined with **Choices**

Make the Logical Choice. Choose Film Logic Canada.

As the official Customs Broker for Spruce Meadows, we believe the journey is just as important as the destination. We believe care builds trust. With nearly 2 decades of experience in Equestrian Tournament Logistics, our team of experts will provide seamless solutions, letting you focus on what you do best.

Logistics Solutions You Can Count On:

-  CARM & Surety Bonds
-  Temporary Admission Permits
-  ATA Carnet Issuance (Canada & US)
-  Expertise in CFIA/USDA Requirements
-  In Person Support from Calgary to Coutts



Nicolas Calla

Nic leverages his passion for service by leading onboarding and deploying the right team resources to meet your every need. Reach out to see why he has become the face of Film Logic Canada!

Call Nic Today 1 888 451 0499

NORTH STAR TOUR 1

'Continental'

CSI 5[★]/2[★]
National Divisions

Jun. 3-7, 2026

Mario Deslauriers (CAN) & S&L
Quatro van de Meerputhoeve,
winners of the 2025 Duncan
Ross Grand Prix.





TOURNAMENT STAFF

MEMBERS OF THE ORGANIZING COMMITTEE

Linda Southern-Heathcott
President & CEO

Marg Southern
Tournament Co-Chairman

Nancy Southern
Tournament Co-Chairman

Joanne Nimitz
Tournament Secretary

Ian Allison
Media

COMPETITIONS MANAGERS

Conor Charlton
Thomas French
Andrew More

TOURNAMENT OFFICE

Haley Hawes
Kate Metikosh

HOSTING

Mayank Bhargava

SUSTAINABILITY

Ron Heathcott

TOURNAMENT OFFICIALS

PRESIDENT OF THE GROUND JURY

Lisa Osachoff

FOREIGN JUDGE

Julie Kasle (USA)

JUDGES

Courtney Anderson
Wendy Graham
Colleen Hoffman
Peter Stoeckl
Anne Reid
Lorne Robertson
Gina Ross

FEI COURSE DESIGNER

Tom Holden (IRL)

COURSE DESIGNERS

Anthony D'Ambrosio
Will Dean Stobie
Florencio Hernandez
Chris Jones
Leopoldo Palacios

COURSE BUILDERS

Maxime Goos
Peter Wong

CHIEF STEWARD

Susan Hawes

FOREIGN STEWARD

TBC

NIGHT STEWARD

Fraser Parrington

STEWARDS

Peeter Aitken
Barbara Bergstrom
Patricia Chalmers
Heather Findlay
Amelia Gomez
Monica Gomez Su
Philippa Keegan
Madeline Lopez Conway
Shirley Pedersen
Alix Wellwood
Stephanie Wood

FEI VETERINARY DELEGATE

Dr. Bernd Stanglmeier
Dr. Mark Sinnott

TREATING VETERINARIAN

TD Equine Veterinary Group
Dr. Dan French

FARRIER

RCH International
Charlie Heathcott
Tom Linford

ALL HORSES must be on the grounds by TUESDAY, JUNE 2



DEFINITE DATE: APRIL 24

lease submit your entry **NO LATER THAN APRIL 15** if you are Canadian Athlete or a Foreign Athlete requesting an invitation



JOG

Wednesday, June 3



CHANGING DIVISIONS

Movement between FEI & EC divisions after the definite date may be restricted.



PLEASE NOTE!

FEI division subject to change until the FEI Schedule has been approved. Please see approved FEI schedule for complete details



EQUESTRIAN CANADA ÉQUESTRE



CLOSING DATE

Your completed entry form(s) must be submitted no later than **4:00 P.M. on Wednesday, April 15**



NOMINATION CHANGES

(add/drop) must be completed by **4:00 P.M. on Tuesday, June 2**



PLEASE NOTE!

You will be charged \$150, in addition to the nomination fee, for any new divisions added during the Tournament. Nomination fees will **NOT** be refunded for those divisions withdrawn from after June 2. EC horses may jump twice per day.



1.10M JUMPER

Nomination Fee: \$200

Eligible Riders: Open to all riders.

Jumps: 1.10m (3'6"). • **Speed:** 350 meters per minute.

<p>301 CORIL HOLDINGS - 1.10M \$1,500 Scoring: Table A, Article 220.2.1.1 One Round Start Fee: \$125</p>	<p>303 CORIL HOLDINGS - 1.10M \$2,500 Scoring: Table A, Articles 220.2.1.2, 218.1.5 Immediate Jump Off Start Fee: \$175</p>
<p>302 CORIL HOLDINGS - 1.10M \$2,000 Scoring: Table A, Article 220.2.1.1 One Round Start Fee: \$150</p>	<p>304 CORIL HOLDINGS - 1.10M \$5,000 Scoring: Table A, Article 220.2.1.2 One Jump Off Start Fee: \$250</p>

1.20M JUMPER

Nomination Fee: \$200

Eligible Riders: Open to all riders.

Jumps: to 1.20m (4'). • **Speed:** 350 meters per minute.

<p>305 CORIL HOLDINGS - 1.20M \$2,000 Scoring: Table A, Article 220.2.1.1 One Round Start Fee: \$150</p>	<p>307 CORIL HOLDINGS - 1.20M \$5,000 Scoring: Table A, Article 220.2.1.2 One Jump Off Start Fee: \$250</p>
<p>306 CORIL HOLDINGS - 1.20M \$2,500 Scoring: Table A, Articles 220.2.1.2, 218.1.5 Immediate Jump Off Start Fee: \$175</p>	<p>308 CORIL HOLDINGS - 1.20M \$5,000 Scoring: Table A, Article 220.2.1.2 One Jump Off Start Fee: \$250</p>

1.30M JUMPER

Nomination Fee: \$200

Eligible Riders: Open to all riders.

Jumps: to 1.30m (4'3"). • **Speed:** 350 meters per minute.

<p>309 CORIL HOLDINGS - 1.30M \$2,000 Scoring: Table A, Article 220.2.1.1 One Round Start Fee: \$150</p>	<p>311 CORIL HOLDINGS - 1.30M \$7,500 Scoring: Table A, Article 220.2.1.2 One Jump Off Start Fee: \$275</p>
<p>310 CORIL HOLDINGS - 1.30M \$2,500 Scoring: Table A, Article 220.2.1.2 One Jump Off Start Fee: \$175</p>	





CSI 2*

Open to all horse/rider combinations entered and accepted in the FEI entry system.

FEI prize money, as listed in the prize list, is awarded in Canadian dollars (CAD). The amounts reflect the CAD equivalent of the FEI-approved USD value.

PLEASE SEE THE APPROVED FEI SCHEDULE FOR FULL DETAILS.

25% breakdown will apply to non-ranking competitions, 30% breakdown will apply to ranking competitions.

312 CORIL HOLDINGS Height: 1.30m Scoring: One Round	\$2,500	316 CORIL HOLDINGS Height: 1.40m Scoring: One Jump Off Qualifier for the GP	\$5,000
313 CORIL HOLDINGS Height: 1.30m Scoring: One Jump Off	\$7,500	317 TOWNSHIP PLANNING + DESIGN CUP	\$10,000
314 CORIL HOLDINGS Height: 1.30m Scoring: One Jump Off	\$10,000	318 CANADIAN UTILITIES 2* GRAND PRIX	\$45,000
315 CORIL HOLDINGS Height: 1.40m Scoring: One Round	\$2,500	FEI • CATEGORY D Height: 1.45m Scoring: One Jump Off Top 25 One horse per rider	

CSI 5*

Open to all horse/rider combinations entered and accepted in the FEI entry system.

FEI prize money, as listed in the prize list, is awarded in Canadian dollars (CAD). The amounts reflect the CAD equivalent of the FEI-approved USD value.

PLEASE SEE THE APPROVED FEI SCHEDULE FOR FULL DETAILS.

25% breakdown will apply to non-ranking competitions, 30% breakdown will apply to ranking competitions.

319 MISSION: POSSIBLE Height: 1.45m Scoring: One Round	\$5,000	323 ALTAGAS CUP FEI • CATEGORY C Height: 1.50m–1.55m Scoring: One Jump Off Qualifier for GP	\$90,000
320 THE PARTNERS FEI • CATEGORY D Height: 1.50m Scoring: One Jump Off	\$45,000	324 AKITA DRILLING GRAND PRIX, PRESENTED BY ROLEX	\$500,000
321 DUNCAN ROSS CUP Height: 1.45m Scoring: One Jump Off	\$25,000	FEI • CATEGORY AA Height: 1.60m Scoring: One Jump Off Top 40 One horse per rider	
322 FRIENDS OF THE MEADOWS FEI • CATEGORY D Height: 1.45m–1.50m Scoring: One Round	\$50,000		

← CAESAR'S →

Where Champions Celebrate

After the competition, the ritual continues at the table



DOWNTOWN | 512 4 Avenue SW | 403.264.1222
WILLOW PARK | 110, 10816 Macleod Trail S | 403.278.3930
caesarssteakhouse.com

TENTATIVE SCHEDULE



'CONTINENTAL' PRESENTED BY ROLEX • JUNE 3–7, 2026

This schedule will be adjusted after the closing date once entries have been received. In addition, this schedule will change nightly once starts have been received. Please be sure to refer to the adjusted schedule for this Tournament, available online at www.sprucemeadows.com or at the Tournament Office.

FEI Definite Date Friday, April 24	Horse Arrival Deadline: Tuesday, June 2	EC Nomination Changes: Tuesday, June 2 by 4:00 P.M.	FEI Jog: Wednesday, June 3
---------------------------------------	--	--	-------------------------------

	8 A.M.	9 A.M.	10 A.M.	11 A.M.	12 P.M.	1 P.M.	2 P.M.	3 P.M.	4 P.M.	5 P.M.	6 P.M.	7 P.M.	8 P.M.	9 P.M.
WEDNESDAY, JUNE 3	North Meadows Office					12:00 P.M. COURSE DESIGNER MEETING	1:00 P.M. OFFICIALS MEETING							
	Chinook Sand Ring			10:00 A.M. FEI JOG CSI 2*	11:15 A.M. FEI JOG CSI 5*									
	Equi-Plex								4:00 P.M. WELCOME EVENT FOR RIDERS & OFFICIALS					

	8 A.M.	9 A.M.	10 A.M.	11 A.M.	12 P.M.	1 P.M.	2 P.M.	3 P.M.	4 P.M.	5 P.M.	6 P.M.	7 P.M.	8 P.M.	9 P.M.
THURSDAY, JUNE 4	All Canada Ring		#315 \$2,500 CORIL HOLDINGS 1.40m (One Round)		#312 \$2,500 CORIL HOLDINGS 1.30m (One Round)		#319 \$5,000 MISSION-POSSIBLE 1.45m (One Round)							
	North American Ring		#301 \$1,500 CORIL HOLDINGS 1.10m (One Round)		#305 \$2,000 CORIL HOLDINGS 1.20m (One Round)		#309 \$2,000 CORIL HOLDINGS 1.30m (One Round)							

	8 A.M.	9 A.M.	10 A.M.	11 A.M.	12 P.M.	1 P.M.	2 P.M.	3 P.M.	4 P.M.	5 P.M.	6 P.M.	7 P.M.	8 P.M.	9 P.M.
FRIDAY, JUNE 5	International Ring				#323 \$90,000 ALTAGAS CUP 1.50m–1.55m (One Jump Off)									
	All Canada Ring		#316 \$5,000 CORIL HOLDINGS 1.40m (One Jump Off)		#313 \$7,500 CORIL HOLDINGS 1.30m (One Jump Off)		#320 \$45,000 THE PARTNERS 1.50m (One Jump Off)							
	North American Ring		#302 \$2,000 CORIL HOLDINGS 1.10m (One Round)		#306 \$2,500 CORIL HOLDINGS 1.20m (Immediate Jump Off)		#310 \$2,500 CORIL HOLDINGS 1.30m (One Jump Off)							

	8 A.M.	9 A.M.	10 A.M.	11 A.M.	12 P.M.	1 P.M.	2 P.M.	3 P.M.	4 P.M.	5 P.M.	6 P.M.	7 P.M.	8 P.M.	9 P.M.
SATURDAY, JUNE 6	All Canada Ring		#314 \$10,000 CORIL HOLDINGS 1.30m (One Jump Off)		#317 \$10,000 TOWNSHIP PLANNING & DESIGN CUP 1.40m (One Jump Off)		#321 \$25,000 DUNCAN ROSS CUP 1.45m (One Jump Off)							
	North American Ring		#303 \$2,500 CORIL HOLDINGS 1.10m (Imm. J/O)		#307 \$5,000 CORIL HOLDINGS 1.20m (One Jump Off)									

	8 A.M.	9 A.M.	10 A.M.	11 A.M.	12 P.M.	1 P.M.	2 P.M.	3 P.M.	4 P.M.	5 P.M.	6 P.M.	7 P.M.	8 P.M.	9 P.M.
SUNDAY, JUNE 7	All Canada Ring		#322 \$50,000 FRIENDS OF THE MEADOWS 1.45m (One Round)		#318 \$45,000 CANADIAN UTILITIES 2* GRAND PRIX 1.45m (One Jump Off)		#324 \$500,000 AKITA DRILLING GRAND PRIX PRESENTED BY ROLEX 1.60m (One Jump Off)							
	North American Ring		#311 \$7,500 CORIL HOLDINGS 1.30m (One Jump Off)		#308 \$5,000 CORIL HOLDINGS 1.20m (One Jump Off)		#304 \$5,000 CORIL HOLDINGS 1.10m (One Jump Off)							

■ CSI5* ■ CSI2* ■ National ■ Judge's Course Walk ○ This competition is a Qualifier for another competition.

NORTH STAR TOUR 1

'National'

PRESENTED BY ROLEX

CSI 5[★]/2[★]
National Divisions

Jun. 9-14, 2026

Vaclav Stanek (CZE) & Quintin,
winners of the 2025 RBC Grand Prix
of Canada, presented by Rolex.





TOURNAMENT STAFF

MEMBERS OF THE ORGANIZING COMMITTEE

Linda Southern-Heathcott
President & CEO
Marg Southern
Tournament Co-Chairman
Nancy Southern
Tournament Co-Chairman
Joanne Nimitz
Tournament Secretary
Ian Allison
Media

COMPETITIONS MANAGERS

Conor Charlton
Thomas French
Andrew More

TOURNAMENT OFFICE

Haley Hawes
Kate Metikosh

HOSTING

Mayank Bhargava

SUSTAINABILITY

Ron Heathcott

TOURNAMENT OFFICIALS

PRESIDENT OF THE GROUND JURY

Colleen Hoffman

FOREIGN JUDGE

Neil O'Connor (USA)

JUDGES

Courtney Anderson
Gay-Ellen Dennis
Lisa Denyer
Wendy Graham
Lisa Osachoff
Peter Stoeckl
Anne Reid
Lorne Robertson

5* COURSE DESIGNER

Olaf Peterson Jr (GER)

2* COURSE DESIGNER

Tom Holden (IRL)

COURSE DESIGNERS

Steffen Buehling
Anthony D'Ambrosio
Florencio Hernandez
Leopoldo Palacios

COURSE BUILDERS

Will Dean Stobie
Maxime Goos
Peter Wong

CHIEF STEWARD

Susan Hawes

FOREIGN STEWARD

Eric Straus (USA)

NIGHT STEWARD

Fraser Parrington

STEWARDS

Peeter Aitken
Barbara Bergstrom
Patricia Chalmers
Heather Findlay
Amelia Gomez
Monica Gomez Su
Philippa Keegan
Madeline Lopez Conway
Shirley Pedersen
Alix Wellwood
Stephanie Wood

FEI VETERINARY DELEGATE

Dr. Bernd Stanglmeier
Dr. Mark Sinnott

TREATING VETERINARIAN

TD Equine Veterinary Group
Dr. Dan French

FARRIER

RCH International
Charlie Heathcott
Tom Linford

ALL HORSES must be on the grounds by TUESDAY, JUNE 2



DEFINITE DATE: APRIL 24

Please submit your entry **NO LATER THAN APRIL 15** if you are Canadian Athlete or a Foreign Athlete requesting an invitation



JOG

Tuesday, June 9



CHANGING DIVISIONS

Movement between FEI & EC divisions after the definite date may be restricted.



PLEASE NOTE!

FEI division subject to change until the FEI Schedule has been approved. Please see approved FEI schedule for complete details



EQUESTRIAN CANADA ÉQUESTRE



CLOSING DATE

Your completed entry form(s) must be submitted no later than **4:00 P.M. on Wednesday, April 15**



NOMINATION CHANGES

(add/drop) must be completed by **4:00 P.M. on Sunday, June 7**



PLEASE NOTE!

You will be charged \$150, in addition to the nomination fee, for any new divisions added during the Tournament. Nomination fees will NOT be refunded for those divisions withdrawn from after June 8. EC horses may jump twice per day.



1.10M JUMPER

Nomination Fee: \$200

Eligible Riders: Open to all riders

Jumps: 1.10m (3'6") • **Speed:** 350 meters per minute

<p>401 CORIL HOLDINGS - 1.10M \$1,500 Scoring: Table A, Article 220.2.1.1 One Round Start Fee: \$125</p>	<p>403 CORIL HOLDINGS - 1.10M \$2,500 Scoring: Table A, Articles 220.2.1.2, 218.1.5 Immediate Jump-Off Start Fee: \$175</p>
<p>402 CORIL HOLDINGS - 1.10M \$2,000 Scoring: Table A, Article 220.2.1.1 One Round Start Fee: \$150</p>	<p>404 CORIL HOLDINGS - 1.10M \$5,000 Scoring: Table A, Article 220.2.1.2 One Jump-Off Start Fee: \$250</p>

1.20M JUMPER

Nomination Fee: \$200

Eligible Riders: Open to all riders

Jumps: 1.20m (4') • **Speed:** 350 meters per minute

<p>405 CORIL HOLDINGS - 1.20M \$2,000 Scoring: Table A, Article 220.2.1.1 One Round Start Fee: \$150</p>	<p>407 CORIL HOLDINGS - 1.20M \$5,000 Scoring: Table A, Article 220.2.1.2 One Jump Off Start Fee: \$250</p>
<p>406 CORIL HOLDINGS - 1.20M \$2,500 Scoring: Table A, Articles 220.2.1.2, 218.1.5 Immediate Jump-Off Start Fee: \$175</p>	<p>408 CORIL HOLDINGS - 1.20M \$7,500 Scoring: Table A, Article 220.2.1.2 One Jump Off Start Fee: \$275</p>

1.20M JUNIOR/AMATEUR JUMPER

Nomination Fee: \$200

Eligible Riders: Open to all Junior/Amateur riders.

Jumps: to 1.20m (4') • **Speed:** 350 meters per minute

<p>409 CORIL HOLDINGS JR/AM - 1.20M \$2,000 Scoring: Table A, Article 220.2.1.1 One Round. Start Fee: \$150</p>
<p>410 CORIL HOLDINGS JR/AM - 1.20M \$2,500 Scoring: Table A, Articles 220.2.1.2, 218.1.5 Immediate Jump-Off. Start Fee: \$175</p>
<p>411 CORIL HOLDINGS JR/AM - 1.20M \$5,000 Scoring: Table A, Article 220.2.1.2 One Jump Off Start Fee: \$250</p>
<p>412 CORIL HOLDINGS JR/AM - 1.20M \$7,500 Scoring: Table A, Article 220.2.1.2 One Jump Off Start Fee: \$275</p>



1.30M JUMPER

Nomination Fee: \$200

Eligible Riders: Open to all riders

Jumps: to 1.30m (4'3") • **Speed:** 350 meters per minute.

<p>413 CORIL HOLDINGS - 1.30M \$2,500</p> <p>Scoring: Table A, Article 220.2.1.1 One Round. Start Fee: \$175</p>	<p>415 CORIL HOLDINGS - 1.30M \$7,500</p> <p>Scoring: Table A, Articles 220.2.1.2 One Jump-Off. Start Fee: \$275</p>
<p>414 CORIL HOLDINGS - 1.30M \$5,000</p> <p>Scoring: Table A, Articles 220.2.1.2, 218.1.5 Immediate Jump-Off. Start Fee: \$250</p>	<p>416 CORIL HOLDINGS - 1.30M \$15,000</p> <p>Scoring: Table A, Article 220.2.1.2 One Jump-Off. Start Fee: \$375</p>

1.30M JUNIOR/AMATEUR JUMPER

Nomination Fee: \$200

Eligible Riders: Open to all Junior/Amateur riders

Jumps: to 1.30m (4'3") • **Speed:** 350 meters per minute

<p>417 CORIL HOLDINGS JR/AM - 1.30M \$2,500</p> <p>Scoring: Table A, Article 220.2.1.1 One Round. Start Fee: \$175</p>	<p>419 CORIL HOLDINGS JR/AM - 1.30M \$7,500</p> <p>Scoring: Table A, Articles 220.2.1.2 One Jump-Off. Start Fee: \$275</p>
<p>418 CORIL HOLDINGS JR/AM - 1.30M \$5,000</p> <p>Scoring: Table A, Articles 220.2.1.2, 218.1.5 Immediate Jump-Off. Start Fee: \$250</p>	<p>420 CORIL HOLDINGS JR/AM - 1.30M \$15,000</p> <p>Scoring: Table A, Article 220.2.1.2 One Jump-Off. Start Fee: \$375</p>

1.40M JUNIOR/AMATEUR JUMPER

Nomination Fee: \$200

Eligible Riders: Open to all Junior/Amateur riders.

Jumps: to 1.40m (4'6"). • **Speed:** 350 meters per minute.

<p>421 CORIL HOLDINGS JR/AM - 1.40M \$2,500</p> <p>Scoring: Table A, Article 220.2.1.1 One Round. Start Fee: \$175</p>	<p>423 THE FANTASTIC 4 JR/AM - 1.40M \$10,000</p> <p>Scoring: Table A, Articles 220.2.1.2, 218.1.5 Immediate Jump-Off. Start Fee: \$300</p>
<p>422 THE HERD JR/AM - 1.40M \$7,500</p> <p>Scoring: Table A, Article 220.2.1.2 218.1.5 Immediate Jump-Off. Start Fee: \$275</p>	<p>424 FRIENDS OF THE MEADOWS JR/AM - 1.40M \$20,000</p> <p>Scoring: Table A, Article 220.2.1.2 One Jump-Off. Start Fee: \$425</p>

CSI 2*

Open to all horse/rider combinations entered and accepted in the FEI entry system.

FEI prize money, as listed in the prize list, is awarded in Canadian dollars (CAD). The amounts reflect the CAD equivalent of the FEI-approved USD value.

PLEASE SEE THE APPROVED FEI SCHEDULE FOR FULL DETAILS.

25% breakdown will apply to non-ranking competitions, 30% breakdown will apply to ranking competitions.

<p>425 CORIL HOLDINGS \$5,000 Height: 1.30m Scoring: One Round</p>	<p>431 MARITIME TRAVEL CUP \$10,000 Height: 1.40m Scoring: One Jump Off</p>
<p>426 CORIL HOLDINGS \$7,500 Height: 1.30m Scoring: One Jump Off</p>	<p>432 ATCO CUP \$25,000 Height: 1.45m Scoring: One Jump Off Qualifier for GP</p>
<p>427 MATCO FINANCIAL CUP \$10,000 Height: 1.30m Scoring: One Jump Off</p>	<p>433 ATCO CUP 2* GRAND PRIX \$50,000 FEI • CATEGORY D Height: 1.45m Scoring: One Jump Off Top 25 One horse per rider</p>
<p>428 CORIL HOLDINGS \$15,000 Height: 1.30m Scoring: One Jump Off</p>	
<p>429 FRIENDS OF THE MEADOWS \$7,500 Height: 1.40m Scoring: One Round</p>	
<p>430 MERCER CUP \$7,500 Height: 1.40m Scoring: One Jump Off</p>	

CSI 5*

Open to all horse/rider combinations entered and accepted in the FEI entry system.

FEI prize money, as listed in the prize list, is awarded in Canadian dollars (CAD). The amounts reflect the CAD equivalent of the FEI-approved USD value.

PLEASE SEE THE APPROVED FEI SCHEDULE FOR FULL DETAILS.

25% breakdown will apply to non-ranking competitions, 30% breakdown will apply to ranking competitions.

<p>434 FRIENDS OF THE MEADOWS CUP \$10,000 Height: 1.45m Scoring: One Round</p>	<p>438 RBC GRAND PRIX OF CANADA, PRESENTED BY ROLEX \$500,000 FEI • CATEGORY AA Height: 1.60m Scoring: One Jump Off Top 40 One horse per rider</p>
<p>435 FRANCIS FAMILY CUP \$20,000 Height: 1.50m Scoring: One Jump Off</p>	<p>439 ATB CUP \$90,000 FEI • CATEGORY C Height: 1.50m Scoring: One Jump Off One horse per rider. Not open to those horses that started in the Grand Prix</p>
<p>436 RECON METAL CUP \$90,000 FEI • CATEGORY C Height: 1.55m Scoring: One Jump Off Qualifier for GP</p>	
<p>437 RBC CAPITAL MARKETS CUP \$45,000 FEI • CATEGORY D Height: 1.50m Scoring: One Jump Off</p>	

TENTATIVE SCHEDULE



'NATIONAL' PRESENTED BY ROLEX • JUNE 9–14, 2026

This schedule will be adjusted after the closing date once entries have been received. In addition, this schedule will change nightly once starts have been received. Please be sure to refer to the adjusted schedule for this Tournament, available online at www.sprucemeadows.com or at the Tournament Office.

FEI Definite Date Friday, April 24	Horse Arrival Deadline: Tuesday, June 2	EC Nomination Changes: Sunday, June 7 at 4:00 P.M.	FEI Jog: Tuesday, June 9
--	---	--	------------------------------------

	8 A.M.	9 A.M.	10 A.M.	11 A.M.	12 P.M.	1 P.M.	2 P.M.	3 P.M.	4 P.M.	5 P.M.	6 P.M.	7 P.M.	8 P.M.	9 P.M.
TUESDAY, JUNE 9	North Meadows Office					12:00 P.M. COURSE DESIGNER MEETING	1:00 P.M. OFFICIALS MEETING							
	Chinook Sand Ring			10:00 A.M. FEI JOG CSI2*	11:15 A.M. FEI JOG CSI5*									
	Equiplex									4:00 P.M. WELCOME EVENT FOR RIDERS & OFFICIALS				

	8 A.M.	9 A.M.	10 A.M.	11 A.M.	12 P.M.	1 P.M.	2 P.M.	3 P.M.	4 P.M.	5 P.M.	6 P.M.	7 P.M.	8 P.M.	9 P.M.
WEDNESDAY, JUNE 10	International Ring								#434 \$10,000 FRIENDS OF THE MEADOWS 1.45m (One Round)					
	All Canada Ring		#429 \$7,500 FRIENDS OF THE MEADOWS 1.40m (One Round)		#425 \$5,000 CORIL HOLDINGS 1.30m (One Round)		#421 \$3,500 CORIL HOLDINGS 1.40m J/A (1 Rnd)							
	All Alberta Ring	#417 \$2,500 CORIL HOLDINGS 1.30m Jr/Am (One Round)		#409 \$2,000 CORIL HOLDINGS 1.20m J/A (One Rnd)		#401 \$1,500 CORIL HOLDINGS 1.10m (One Round)		#405 \$2,000 CORIL HOLDINGS 1.20m (One Round)		#413 \$2,500 CORIL HOLDINGS 1.30m (One Round)				

	8 A.M.	9 A.M.	10 A.M.	11 A.M.	12 P.M.	1 P.M.	2 P.M.	3 P.M.	4 P.M.	5 P.M.	6 P.M.	7 P.M.	8 P.M.	9 P.M.
THURSDAY, JUNE 11	International Ring					#435 \$20,000 FRANCIS FAMILY CUP 1.50m (One Jump Off)			#436 \$90,000 RECON METAL CUP 1.55m (One Jump Off)					
	All Canada Ring		#426 \$7,500 CORIL HOLDINGS 1.30m (One Jump Off)		#430 \$7,500 MERCER CUP 1.40m (One Jump Off)		#422 \$7,500 THE HERD 1.40m Jr/Am (Imm. J/O)							
	All Alberta Ring	#402 \$2,000 CORIL HOLDINGS 1.10m (One Round)		#418 \$5,000 CORIL HOLDINGS 1.30m J/A (Imm. J/O)		#410 \$2,500 CORIL HOLDINGS 1.20m J/A (Imm. J/O)		#406 \$2,500 CORIL HOLDINGS 1.20m (Imm. J/O)		#414 \$5,000 CORIL HOLDINGS 1.30m (Imm. J/O)				

	8 A.M.	9 A.M.	10 A.M.	11 A.M.	12 P.M.	1 P.M.	2 P.M.	3 P.M.	4 P.M.	5 P.M.	6 P.M.	7 P.M.	8 P.M.	9 P.M.
FRIDAY, JUNE 12	International Ring						#432 ATCO CUP Phase I - 1.45m (One J/O)		#432 \$25,000 ATCO CUP Phase II - 1.45m (One Jump Off)			#437 \$45,000 RBC CAPITAL MARKETS CUP 1.50m (One Jump Off)		
	All Canada Ring				#427 \$10,000 MATCO FINANCIAL CUP 1.30m (One Round)									
	All Alberta Ring	#415 \$7,500 CORIL HOLDINGS 1.30m (One Jump Off)		#407 \$5,000 CORIL HOLDINGS 1.20m (One J/O)		#411 \$5,000 CORIL HOLDINGS 1.20m J/A (One J/O)		#403 \$2,500 CORIL HOLDINGS 1.10m (Immediate Jump Off)		#419 \$7,500 CORIL HOLDINGS 1.30m Jr/Am (One Jump Off)				

	8 A.M.	9 A.M.	10 A.M.	11 A.M.	12 P.M.	1 P.M.	2 P.M.	3 P.M.	4 P.M.	5 P.M.	6 P.M.	7 P.M.	8 P.M.	9 P.M.
SATURDAY, JUNE 13	International Ring	COURSE CLOSED				GRAND PRIX COURSE WALK	SPECIAL FEATURES		#438 \$500,000 RBC GRAND PRIX OF CANADA presented by Rolex 1.60m (One Jump Off)					
	All Canada Ring		#423 \$10,000 THE FANTASTIC 4 1.40m J/A (Imm. J/O)		#428 \$15,000 TRIMAC CUP 1.30m (One Jump Off)						#431 \$10,000 MARITIME TRAVEL CUP 1.40m (One Jump Off)			
	All Alberta Ring	#416 \$15,000 CORIL HOLDINGS 1.30m (One Jump Off)												

	8 A.M.	9 A.M.	10 A.M.	11 A.M.	12 P.M.	1 P.M.	2 P.M.	3 P.M.	4 P.M.	5 P.M.	6 P.M.	7 P.M.	8 P.M.	9 P.M.
SUNDAY, JUNE 14	International Ring					#433 \$50,000 ATCO CUP CSI 2* GRAND PRIX 1.45m (One Jump Off)			#439 \$90,000 ATB CUP 1.50m (One Jump Off)					
	All Canada Ring		#424 \$20,000 FRIENDS OF THE MEADOWS 1.40m J/A (One J/O)											
	All Alberta Ring	#412 \$7,500 CORIL HOLDINGS 1.20m Jr/Am (One Jump Off)		#404 \$5,000 CORIL HOLDINGS 1.10m (One Jump Off)		#408 \$7,500 CORIL HOLDINGS 1.20m (One J/O)		#420 \$10,000 CORIL HOLDINGS 1.30m J/A (One Jump Off)						

■ CSI5*
 ■ CSI2*
 ■ National
 ■ Judge's Course Walk
 Ⓚ This competition is a Qualifier for another competition.

NORTH STAR TOUR 2

'Pan American'

PRESENTED BY ROLEX

CSI 5[★]/2[★]
National Divisions

Jun. 24–28, 2026

Matthew Sampson (GBR) & Daniel,
winners of the 2025 'Pan American'
Cup, presented by Rolex





TOURNAMENT STAFF

MEMBERS OF THE ORGANIZING COMMITTEE

Linda Southern-Heathcott
President & CEO

Marg Southern
Tournament Co-Chairman

Nancy Southern
Tournament Co-Chairman

Joanne Nimitz
Tournament Secretary

Ian Allison
Media

COMPETITIONS MANAGERS

Conor Charlton
Thomas French
Andrew More

TOURNAMENT OFFICE

Haley Hawes
Kate Metikosh

HOSTING

Mayank Bhargava

SUSTAINABILITY

Ron Heathcott

TOURNAMENT OFFICIALS

PRESIDENT OF THE GROUND JURY

Courtney Anderson

FOREIGN JUDGE

David Distler (USA)

JUDGES

Gay-Ellen Dennis
Connie Dorsch
Wendy Graham
Colleen Hoffman
Lisa Osachoff
Gayle Pitt
Anne Reid
Lorne Robertson
Gina Ross

5* COURSE DESIGNER

Anderson Lima (MEX)

2* COURSE DESIGNER

Julien Pradervand (SUI)

COURSE DESIGNERS

Anthony D'Ambrosio
Florencio Hernandez
Chris Jones
Leopoldo Palacios
Jedd Smith

COURSE BUILDERS

Will Dean Stobie
Maxime Goos
Peter Wong

CHIEF STEWARD

Susan Hawes

FOREIGN STEWARD

Monica Gomez Su (MEX)

NIGHT STEWARD

Fraser Parrington

STEWARDS

Peeter Aitken
Barbara Bergstrom
Patricia Chalmers
Heather Findlay
Amelia Gomez
Philippa Keegan
Madeline Lopez Conway
Shirley Pedersen
Pol Marine Vandenperrenboom
Alix Wellwood
Stephanie Wood

FEI VETERINARY DELEGATE

Dr. Mark Sinnott
Dr. Katy White

TREATING VETERINARIAN

TD Equine Veterinary Group
Dr. Dan French

FARRIER

RCH International
Charlie Heathcott
Tom Linford

ALL HORSES must be on the grounds by TUESDAY, JUNE 23



DEFINITE DATE: MAY 15

Please submit your entry **no later than APRIL 15** if you are Canadian Athlete or a Foreign Athlete requesting an invitation



JOG

Wednesday, June 24



CHANGING DIVISIONS

Movement between FEI & EC divisions after the definite date may be restricted.



PLEASE NOTE!

FEI division subject to change until the FEI Schedule has been approved. Please see approved FEI schedule for complete details



EQUESTRIAN CANADA ÉQUESTRE



CLOSING DATE

Your completed entry form(s) must be submitted **no later than 4:00 P.M. on Wednesday, April 15**



NOMINATION CHANGES

(add/drop) must be completed by **4:00 P.M. on Tuesday, June 23**



PLEASE NOTE!

You will be charged \$150, in addition to the nomination fee, for any new divisions added while at the Tournament. Nomination fees will **NOT** be refunded for those divisions withdrawn from after June 23. EC horses may jump twice per day.



1.10M JUMPER

Nomination Fee: \$200

Eligible Riders: Open to all riders

Jumps: 1.10m (3'6") • **Speed:** 350 meters per minute

501 FRIENDS OF THE MEADOWS - 1.10M \$1,500

Scoring: Table A, Article 220.2.1.1 One Round

Start Fee: \$125

502 FRIENDS OF THE MEADOWS - 1.10M \$2,000

Scoring: Table A, Articles 220.2.1.2, 218.1.5

Immediate Jump-Off

Start Fee: \$150

503 FRIENDS OF THE MEADOWS - 1.10M \$2,500

Scoring: Table A, Articles 220.2.1.2, 218.1.5

Immediate Jump-Off

Start Fee: \$175

504 FRIENDS OF THE MEADOWS - 1.10M \$5,000

Scoring: Table A, Article 220.2.1.2 One Jump-Off

Start Fee: \$250

1.20M JUMPER

Nomination Fee: \$200

Eligible Riders: Open to all riders

Jumps: to 1.20m (4') • **Speed:** 350 meters per minute

505 FRIENDS OF THE MEADOWS - 1.20M \$2,000

Scoring: Table A, Article 220.2.1.1 One Round

Start Fee: \$150

506 FRIENDS OF THE MEADOWS - 1.20M \$2,500

Scoring: Table A, Articles 220.2.1.2, 218.1.5

Immediate Jump-Off

Start Fee: \$175

507 FRIENDS OF THE MEADOWS - 1.20M \$5,000

Scoring: Table A, Articles 220.2.1.2, 218.1.5

Immediate Jump-Off

Start Fee: \$250

508 FRIENDS OF THE MEADOWS - 1.20M \$7,500

Scoring: Table A, Article 220.2.1.2 One Jump-Off

Start Fee: \$275

1.20M JUNIOR/AMATEUR JUMPER

Nomination Fee: \$200

Eligible Riders: Open to all Junior/Amateur riders

Jumps: to 1.20m (4') • **Speed:** 350 meters per minute

**509 FRIENDS OF THE MEADOWS
JR/AM - 1.20M \$2,000**

Scoring: Table A, Article 220.2.1.1 One Round

Start Fee: \$150

**510 FRIENDS OF THE MEADOWS
JR/AM - 1.20M \$2,500**

Scoring: Table A, Articles 220.2.1.2, 218.1.5

Immediate Jump Off

Start Fee: \$175

**511 FRIENDS OF THE MEADOWS
JR/AM - 1.20M \$5,000**

Scoring: Table A, Articles 220.2.1.2, 218.1.5

Immediate Jump Off

Start Fee: \$250

**512 FRIENDS OF THE MEADOWS
JR/AM - 1.20M \$7,500**

Scoring: Table A, Article 220.2.1.2 One Jump Off

Start Fee: \$275



1.30M JUMPER

Nomination Fee: \$200

Eligible Riders: Open to all riders

Jumps: to 1.30m (4'3") • **Speed:** 350 meters per minute

513 FRIENDS OF THE MEADOWS - 1.30M \$2,500

Scoring: Table A, Article 220.2.1.1 One Round

Start Fee: \$175

514 FRIENDS OF THE MEADOWS - 1.30M \$5,000

Scoring: Table A, Articles 220.2.1.2, 218.1.5

Immediate Jump-Off

Start Fee: \$250

515 FRIENDS OF THE MEADOWS - 1.30M \$7,500

Scoring: Table A, Articles 220.2.1.2 One Jump Off

Start Fee: \$275

516 FRIENDS OF THE MEADOWS - 1.30M \$10,000

Scoring: Table A, Article 220.2.1.2 One Jump Off

Start Fee: \$300

1.30M JUNIOR/AMATEUR JUMPER

Nomination Fee: \$200

Eligible Riders: Open to all Junior/Amateur riders

Jumps: to 1.30m (4'3") • **Speed:** 350 meters per minute

517 FRIENDS OF THE MEADOWS

JR/AM - 1.30M

\$2,500

Scoring: Table A, Article 220.2.1.1 One Round

Start Fee: \$175

518 FRIENDS OF THE MEADOWS

JR/AM - 1.30M

\$5,000

Scoring: Table A, Articles 220.2.1.2, 218.1.5

Immediate Jump-Off

Start Fee: \$250

519 FRIENDS OF THE MEADOWS

JR/AM - 1.30M

\$7,500

Scoring: Table A, Articles 220.2.1.2 One Jump Off

Start Fee: \$275

520 FRIENDS OF THE MEADOWS

JR/AM - 1.30M

\$10,000

Scoring: Table A, Article 220.2.1.2 One Jump Off

Start Fee: \$300

1.40M JUNIOR/AMATEUR JUMPER

Nomination Fee: \$200

Eligible Riders: Open to all Junior/Amateur riders

Jumps: to 1.40m (4'6") • **Speed:** 350 meters per minute

521 FRIENDS OF THE MEADOWS

JR/AM - 1.40M

\$2,500

Scoring: Table A, Article 220.2.1.1 One Round

Start Fee: \$175

522 TRIMAC JR/AM - 1.40M

\$7,500

Scoring: Table A, Articles 220.2.1.2 One Jump Off

Start Fee: \$275

523 FRENCH FAMILY CUP

JR/AM - 1.40M

\$10,000

Scoring: Table A, Article 220.2.1.2 One Jump Off

Start Fee: \$300

524 THE FANTASTIC 4 JR/AM - 1.40M

\$15,000

Scoring: Table A, Article 220.2.1.2 One Jump Off

Start Fee: \$375

CSI 2*

Open to all horse/rider combinations entered and accepted in the FEI entry system.

FEI prize money, as listed in the prize list, is awarded in Canadian dollars (CAD). The amounts reflect the CAD equivalent of the FEI-approved USD value.

PLEASE SEE THE APPROVED FEI SCHEDULE FOR FULL DETAILS.

25% breakdown will apply to non-ranking competitions, 30% breakdown will apply to ranking competitions.

525 FRIENDS OF THE MEADOWS	\$5,000	532 HALO HOLDINGS	\$20,000
Height: 1.30m		Height: 1.40m	
Scoring: One Round		Scoring: One Jump Off	
526 THE CREW	\$7,500	533 FRIENDS OF THE MEADOWS	\$25,000
Height: 1.30m		Height: 1.45m	
Scoring: Immediate Jump Off		Scoring: One Jump Off	
527 THE ENTOURAGE	\$10,000	Qualifier for GP	
Height: 1.30m		534 CORIL HOLDINGS 2* GRAND PRIX	\$50,000
Scoring: One Jump Off		FEI • CATEGORY D	
528 FRIENDS OF THE MEADOWS	\$15,000	Height: 1.45m	
Height: 1.30m		Scoring: One Jump Off	
Scoring: One Jump Off		Top 30	
529 FRIENDS OF THE MEADOWS	\$7,500	One horse per rider	
Height: 1.40m			
Scoring: One Round			
530 EQUUS	\$7,500		
Height: 1.40m			
Scoring: Immediate Jump Off			
531 HALO HOLDINGS	\$10,000		
Height: 1.40m			
Scoring: One Jump Off			

CSI 5*

Open to all horse/rider combinations entered and accepted in the FEI entry system.

FEI prize money, as listed in the prize list, is awarded in Canadian dollars (CAD). The amounts reflect the CAD equivalent of the FEI-approved USD value.

PLEASE SEE THE APPROVED FEI SCHEDULE FOR FULL DETAILS.

25% breakdown will apply to non-ranking competitions, 30% breakdown will apply to ranking competitions.

535 MISSION: POSSIBLE	\$15,000	538 CANADIAN UTILITIES CUP	\$100,000
Height: 1.50m		FEI • CATEGORY C	
Scoring: One Round		Height: 1.55m	
536 FRIENDS OF THE MEADOWS CUP	\$50,000	Scoring: One Jump Off	
FEI • CATEGORY D		Qualifier for GP	
Height: 1.50m		539 AON GRAND PRIX, PRESENTED BY ROLEX	\$500,000
Scoring: One Jump Off		FEI • CATEGORY AA	
537 WEST CANADIAN CUP	\$50,000	Height: 1.60m	
FEI • CATEGORY D		Scoring: One Jump Off	
Height: 1.45m		Top 40	
Scoring: One Jump Off		One horse per rider	

TENTATIVE SCHEDULE



'PAN AMERICAN' PRESENTED BY ROLEX • JUNE 24–28, 2026

This schedule will be adjusted after the closing date once entries have been received. In addition, this schedule will change nightly once starts have been received. Please be sure to refer to the adjusted schedule for this Tournament, available online at www.sprucemeadows.com or at the Tournament Office.

FEI Definite Date: Friday, May 15	Horse Arrival Deadline: Tuesday, June 23	EC Nomination Changes: Tuesday, June 23 by 4:00 P.M.	FEI Jog: Wednesday, June 24
--------------------------------------	---	---	--------------------------------

	8 A.M.	9 A.M.	10 A.M.	11 A.M.	12 P.M.	1 P.M.	2 P.M.	3 P.M.	4 P.M.	5 P.M.	6 P.M.	7 P.M.	8 P.M.	9 P.M.
WEDNESDAY, JUNE 24	North Meadows Office					12:00 P.M. COURSE DESIGNER MEETING	1:00 P.M. OFFICIALS MEETING							
	Chinook Sand Ring			10:00 A.M. FEI JOG CSI 2*	11:15 A.M. FEI JOG CSI 5*									
	Equi-Plex								4:00 P.M. WELCOME EVENT FOR RIDERS & OFFICIALS					
THURSDAY, JUNE 25	International Ring								#535 MISSION: POSSIBLE 1.50m (One Round) \$15,000					
	North American Ring		#529 FRIENDS OF THE MEADOWS 1.40m (One Round) \$7,500			#525 FRIENDS OF THE MEADOWS 1.30m (One Round) \$5,000								
	All Canada Ring				#517 FRIENDS OF THE MEADOWS 1.30m Jr/Am (One Round) \$2,500		#521 FRIENDS OF THE MEADOWS 1.40m Jr/Am (One Round) \$2,500		#513 FRIENDS OF THE MEADOWS 1.30m (One Round) \$2,500					
	Rocky Mountain Ring	#509 FRIENDS OF THE MEADOWS 1.20m Jr/Am (One Round) \$2,000		#505 FRIENDS OF THE MEADOWS 1.20m (One Round) \$2,000			#501 FRIENDS OF THE MEADOWS 1.10m (One Round) \$1,500							
FRIDAY, JUNE 26	International Ring								#538 CANADIAN UTILITIES CUP 1.55m (One Jump Off) \$100,000					
	North American Ring		#530 EQUUS CUP 1.40m (One Jump Off) \$7,500		#533 FRIENDS OF THE MEADOWS 1.45m (One Jump Off) \$25,000				#526 THE CREW 1.30m (Immediate Jump Off) \$7,500					
	All Canada Ring		#518 FRIENDS OF THE MEADOWS 1.30m Jr/Am (Immediate Jump Off) \$5,000		#522 TRIMAC CUP 1.40m Jr/Am (One J/O) \$7,500		#514 FRIENDS OF THE MEADOWS 1.30m (Immediate Jump Off) \$5,000							
	Rocky Mountain Ring	#502 FRIENDS OF THE MEADOWS 1.10m (Immediate Jump Off) \$2,000				#506 FRIENDS OF THE MEADOWS 1.20m (Immediate Jump Off) \$2,500		#510 FRIENDS OF THE MEADOWS 1.20m Jr/Am (Imm. J/O) \$2,500						
SATURDAY, JUNE 27	International Ring						#536 FRIENDS OF THE MEADOWS 1.50m (One Jump Off) \$50,000							
	North American Ring		#531 HALO HOLDINGS 1.40m (One Jump Off) \$10,000		#527 THE ENTOURAGE 1.30m (One Jump Off) \$10,000									
	All Canada Ring		#515 FRIENDS OF THE MEADOWS 1.30m (One J/O) \$7,500		#523 FRENCH FAMILY CUP 1.40m J/A (One J/O) \$10,000		#519 FRIENDS OF THE MEADOWS 1.30m Jr/Am (One Jump Off) \$7,500							
	Rocky Mountain Ring		#503 FRIENDS OF THE MEADOWS 1.10m (Immediate Jump Off) \$2,500		#507 FRIENDS OF THE MEADOWS 1.20m (Imm. J/O) \$5,000			#511 FRIENDS OF THE MEADOWS 1.20m J/Am (Imm. J/O) \$5,000						
SUNDAY, JUNE 28	International Ring			#537 WEST CANADIAN CUP presented by WCD 1.45m–1.50m (One Jump Off) \$50,000			#539 ADN GRAND PRIX presented by Rolex 1.60m (One Jump Off) \$500,000							
	North American Ring		#534 CORIL HOLDINGS CSI2* GP 1.45m (One Jump Off) \$50,000		#528 FRIENDS OF THE MEADOWS 1.30m (One Jump Off) \$15,000			#532 HALO HOLDINGS 1.40m (One Jump Off) \$20,000						
	All Canada Ring			#524 THE FANTASTIC 4 1.40m J/A (One J/O) \$15,000		#520 FRIENDS OF THE MEADOWS 1.30m Jr/Am (One Jump Off) \$10,000		#516 FRIENDS OF THE MEADOWS 1.30m (One Jump Off) \$10,000						
	Rocky Mountain Ring	#504 FRIENDS OF THE MEADOWS 1.10m (One Jump Off) \$5,000				#508 FRIENDS OF THE MEADOWS 1.20m (One Jump Off) \$7,500		#512 FRIENDS OF THE MEADOWS 1.20m Jr/Am (Imm. J/O) \$7,500						

■ CSI5* ■ CSI2* ■ National ■ Judge's Course Walk ○ This competition is a Qualifier for another competition.

NORTH STAR TOUR 2

'North American'

PRESENTED BY ROLEX

CSI 5*/2*

National Divisions

Jun. 30-Jul. 5, 2026

Daniel Coyle (IRL) & Incredible,
winners of the 2025 ATCO Queen
Elizabeth II Cup





TOURNAMENT STAFF

MEMBERS OF THE ORGANIZING COMMITTEE

Linda Southern-Heathcott
President & CEO

Marg Southern
Tournament Co-Chairman

Nancy Southern
Tournament Co-Chairman

Joanne Nimitz
Tournament Secretary

Ian Allison
Media

COMPETITIONS MANAGERS

Conor Charlton
Thomas French
Andrew More

TOURNAMENT OFFICE

Haley Hawes
Kate Metikosh

HOSTING

Mayank Bhargava

SUSTAINABILITY

Ron Heathcott

TOURNAMENT OFFICIALS

PRESIDENT OF THE GROUND JURY

Colleen Hoffman

FOREIGN JUDGE

Lilianna Rivera (BOL)

JUDGES

Courtney Anderson
Gay-Ellen Dennis
Connie Dorsch
Lisa Osachoff
Gayle Pitt
Anne Reid
Lorne Robertson
Gina Ross

5* COURSE DESIGNER

Santiago Varela (ESP)

2* COURSE DESIGNER

Anderson Lima (MEX)

COURSE DESIGNERS

Anthony D'Ambrosio
Isabel Fernandez de Canete
Florencio Hernandez
Chris Jones
Anderson Lima
Leopoldo Palacios
Julien Pradervand
Jedd Smith

COURSE BUILDERS

Will Dean Stobie
Maxime Goos
Peter Wong

CHIEF STEWARD

Susan Hawes

FOREIGN STEWARD

Dan Reed (USA)

NIGHT STEWARD

Fraser Parrington

STEWARDS

Peeter Aitken
Barbara Bergstrom
Patricia Chalmers
Heather Findlay
Amelia Gomez
Monica Gomez Su
Philippa Keegan
Madeline Lopez Conway
Shirley Pedersen
Pol Marine Vandenperrenboom
Alix Wellwood
Stephanie Wood

FEI VETERINARY DELEGATE

Dr. Mark Sinnott
Dr. Katy White

TREATING VETERINARIAN

TD Equine Veterinary Group
Dr. Dan French

FARRIER

RCH International
Charlie Heathcott
Tom Linford

ALL HORSES must be on the grounds by TUESDAY, JUNE 23



DEFINITE DATE: MAY 15

Please submit your entry **NO LATER THAN MAY 15** if you are Canadian Athlete or a Foreign Athlete requesting an invitation



JOG

Tuesday, June 30



CHANGING DIVISIONS

Movement between FEI & EC divisions after the definite date may be restricted.



PLEASE NOTE!

FEI division subject to change until the FEI Schedule has been approved. Please see approved FEI schedule for complete details



EQUESTRIAN CANADA ÉQUESTRE



CLOSING DATE

Your completed entry form(s) must be submitted no later than **4:00 P.M. on Wednesday, April 15**



NOMINATION CHANGES

(add/drop) must be completed by **4:00 P.M. on Sunday, June 28**



PLEASE NOTE!

You will be charged \$150, in addition to the nomination fee, for any new divisions added while at the Tournament. Nomination fees will NOT be refunded for those divisions withdrawn from after June 29. EC horses may jump twice per day.



1.10M JUMPER

Nomination Fee: \$200

Eligible Riders: Open to all riders

Jumps: 1.10m (3'6") • **Speed:** 350 meters per minute

- | | |
|---|--|
| <p>601 FRIENDS OF THE MEADOWS - 1.10M \$1,500
 Scoring: Table A, Article 220.2.1.1 One Round
 Start Fee: \$125</p> <p>602 FRIENDS OF THE MEADOWS - 1.10M \$2,000
 Scoring: Table A, Articles 220.2.1.2, 218.1.5
 Immediate Jump Off
 Start Fee: \$150</p> | <p>603 FRIENDS OF THE MEADOWS - 1.10M \$2,500
 Scoring: Table A, Articles 220.2.1.2, 218.1.5
 Immediate Jump Off
 Start Fee: \$175</p> <p>604 FRIENDS OF THE MEADOWS - 1.10M \$5,000
 Scoring: Table A, Article 220.2.1.2 One Jump Off
 Start Fee: \$250</p> |
|---|--|

1.20M JUMPER

Nomination Fee: \$200

Eligible Riders: Open to all riders

Jumps: to 1.20m (4') • **Speed:** 350 meters per minute

- | | |
|---|--|
| <p>605 FRIENDS OF THE MEADOWS - 1.20M \$2,000
 Scoring: Table A, Article 220.2.1.1 One Round
 Start Fee: \$150</p> <p>606 FRIENDS OF THE MEADOWS - 1.20M \$2,500
 Scoring: Table A, Articles 220.2.1.2, 218.1.5
 Immediate Jump Off
 Start Fee: \$175</p> | <p>607 FRIENDS OF THE MEADOWS - 1.20M \$5,000
 Scoring: Table A, Articles 220.2.1.2, 218.1.5
 Immediate Jump Off
 Start Fee: \$250</p> <p>608 FRIENDS OF THE MEADOWS - 1.20M \$7,500
 Scoring: Table A, Article 220.2.1.2 One Jump Off
 Start Fee: \$275</p> |
|---|--|

1.20M JUNIOR/AMATEUR JUMPER

Nomination Fee: \$200

Eligible Riders: Open to all Junior/Amateur riders

Jumps: to 1.20m (4') • **Speed:** 350 meters per minute

- | | |
|---|--|
| <p>609 FRIENDS OF THE MEADOWS
 JR/AM - 1.20M \$2,000
 Scoring: Table A, Article 220.2.1.1 One Round
 Start Fee: \$150</p> <p>610 FRIENDS OF THE MEADOWS
 JR/AM - 1.20M \$2,500
 Scoring: Table A, Articles 220.2.1.2, 218.1.5
 Immediate Jump Off
 Start Fee: \$175</p> | <p>611 FRIENDS OF THE MEADOWS
 JR/AM - 1.20M \$5,000
 Scoring: Table A, Articles 220.2.1.2, 218.1.5
 Immediate Jump Off
 Start Fee: \$250</p> <p>612 FRIENDS OF THE MEADOWS
 JR/AM - 1.20M \$7,500
 Scoring: Table A, Article 220.2.1.2 One Jump Off
 Start Fee: \$275</p> |
|---|--|



1.30M JUMPER

Nomination Fee: \$200

Eligible Riders: Open to all riders.

Jumps: to 1.30m (4'3"). • **Speed:** 350 meters per minute.

613 FRIENDS OF THE MEADOWS - 1.30M \$2,500

Scoring: Table A, Article 220.2.1.1 One Round

Start Fee: \$175

614 FRIENDS OF THE MEADOW - 1.30M \$5,000

Scoring: Table A, Articles 220.2.1.2, 218.1.5

Immediate Jump Off

Start Fee: \$250

615 FRIENDS OF THE MEADOWS - 1.30M \$7,500

Scoring: Table A, Articles 220.2.1.2 One Jump Off

Start Fee: \$275

616 FRIENDS OF THE MEADOWS - 1.30M \$15,000

Scoring: Table A, Article 220.2.1.2 One Jump Off

Start Fee: \$375

1.30M JUNIOR/AMATEUR JUMPER

Nomination Fee: \$200

Eligible Riders: Open to all Junior/Amateur riders.

Jumps: to 1.30m (4'3"). • **Speed:** 350 meters per minute.

617 FRIENDS OF THE MEADOWS

JR/AM - 1.30M

\$2,500

Scoring: Table A, Article 220.2.1.1 One Round

Start Fee: \$175

618 FRIENDS OF THE MEADOWS

JR/AM - 1.30M

\$5,000

Scoring: Table A, Articles 220.2.1.2, 218.1.5

Immediate Jump Off

Start Fee: \$250

619 FRIENDS OF THE MEADOWS

JR/AM - 1.30M

\$7,500

Scoring: Table A, Articles 220.2.1.2 One Jump Off

Start Fee: \$275

620 FRIENDS OF THE MEADOWS

JR/AM - 1.30M

\$15,000

Scoring: Table A, Article 220.2.1.2 One Jump Off

Start Fee: \$375

1.40M JUNIOR/AMATEUR JUMPER

Nomination Fee: \$200

Eligible Riders: Open to all Junior/Amateur riders.

Jumps: to 1.40m (4'6"). • **Speed:** 350 meters per minute.

621 FRIENDS OF THE MEADOWS

JR/AM - 1.40M

\$2,500

Scoring: Table A, Article 220.2.1.1 One Round

Start Fee: \$175

622 FRIENDS OF THE MEADOWS

JR/AM - 1.40M

\$7,500

Scoring: Table A, Article 220.2.1.2 218.1.5

Immediate Jump-Off

Start Fee: \$275

623 FRIENDS OF THE MEADOWS

JR/AM - 1.40M

\$10,000

Scoring: Table A, Article 220.2.1.2 One Jump Off

Start Fee: \$300

624 FRIENDS OF THE MEADOWS

JR/AM - 1.40M

\$20,000

Scoring: Table A, Article 220.2.1.2 One Jump Off

Start Fee: \$425

EC SPORT LICENSING 2026

SAFETY, INCLUSIVITY, & EXCELLENCE

Your guide to the latest updates for the competition season in Canada

IMPORTANT CHANGES have been implemented to enhance the safety and inclusivity of equestrian sport. Whether you're an athlete, parent, coach, official, or competition staff, your role is crucial in upholding these standards. Here's what you need to know:

SAFE SPORT TRAINING PREREQUISITE:

- The two free EC Safe Sport training modules must be completed before purchasing a Sport Licence. Check your training status on MyEC by clicking on the ECampus button.

DISCONTINUED TEMPORARY LICENCES AND TEMPORARY HORSE REGISTRATIONS:

- Temporary EC Sport Licences are now discontinued at competitions. All riders, owners, and coaches must possess an EC Sport Licence to participate in events. All horses must have a Horse Recording where level and division require.

AVAILABLE SHOW LEVEL UPGRADES:

- Explore higher-level competitions with temporary upgrades via your MyEC Portal. Note: National Rankings Points are not tabulated for upgraded results.

COACH STATUS REMINDER—2026 SEASON

- Coaches attending EC-Sanctioned competition must hold a valid Licensed Coach Status. Any Coach with Registered Coach Status must purchase a Single Event Upgrade for \$55.00. This purchase can be made through the My EC account.
- Coaches without a valid Licensed Coach Status or Registered Coach Status with Single Event Upgrade Status are not eligible to be represented as a coach at EC-Sanctioned events and may be subject to fines. Please complete your requirements in advance to avoid any fines and delays.

DECLARE YOURSELF A SELF-COACHED ATHLETE

- Athletes without a coach on-site can declare themselves as self-coached by entering their own **EC SPORT LICENSE NUMBER** or enter "self-coached" in the **COACH FIELD** on their registration/entry form.
- Please note: Coaches that **DO NOT ATTEND** the events **SHOULD NOT BE LISTED** on the entry form.

“ When registering for EC sanctioned competitions, athletes must indicate the name of their coach on the entry form or specify that they are self-coached. Coaches from other countries, must be in good-standing with their home federation and must declare/have proof of insurance. See Rules of Equestrian Canada, Section A, General Regulations, Article 102, Safe Sport Environments. ”

WWW.EQUESTRIAN.CA

Fostering a love of horses
and sport for life



ALBERTA
EQUESTRIAN
FEDERATION



SUN LIFE DERBY

642 SUN LIFE DERBY

\$125,000

Height: 1.40m-1.45m

Scoring: Table A, Article 220.2.1.2 One Jump Off

Start Fee: \$1,000

Natural obstacles WILL be FEATURED. These may include but are not limited to the Devil's Dyke, bank, dry ditch and open water.

The final vertical will be 1.50m in height.

This competition will be run on the International Ring

ELIGIBILITY:

Open to EC and FEI horses.

Horse/Rider combinations must have completed at least one 2* or 1.40m EC round during the 'North American' tournament to enter. (EL, DNF, RET, DNS do not count).

CSI 2*

Open to all horse/rider combinations entered and accepted in the FEI entry system.

FEI prize money, as listed in the prize list, is awarded in Canadian dollars (CAD). The amounts reflect the CAD equivalent of the FEI-approved USD value.

PLEASE SEE THE APPROVED FEI SCHEDULE FOR FULL DETAILS.

25% breakdown will apply to non-ranking competitions, 30% breakdown will apply to ranking competitions.

625 FRIENDS OF THE MEADOWS	\$5,000	631 FRIENDS OF THE MEADOWS	\$10,000
Height: 1.30m		Height: 1.40m	
Scoring: One Round		Scoring: One Jump Off	
626 FRIENDS OF THE MEADOWS	\$7,500	632 FRIENDS OF THE MEADOWS	\$20,000
Height: 1.30m		Height: 1.40m	
Scoring: Immediate Jump Off		Scoring: One Jump Off	
627 FRIENDS OF THE MEADOWS	\$10,000	633 FRIENDS OF THE MEADOWS	\$25,000
Height: 1.30m		Height: 1.45m	
Scoring: One Jump Off		Scoring: One Jump Off	
628 MOORE EQUINE CUP	\$15,000	Qualifier for GP	
Height: 1.30m		634 FRIENDS OF THE MEADOWS 2*	
Scoring: One Jump Off		GRAND PRIX	\$50,000
629 FRIENDS OF THE MEADOWS	\$15,000	FEI • CATEGORY D	
Height: 1.40m		Height: 1.45m	
Scoring: One Round, naturals optioned		Scoring: One Jump Off	
630 FRIENDS OF THE MEADOWS	\$7,500	Top 30	
Height: 1.40m		One horse per rider	
Scoring: Immediate Jump Off			

CSI 5*

Open to all horse/rider combinations who have been entered and accepted in the FEI entry system.

FEI prize money, as listed in the prize list, is awarded in Canadian dollars (CAD). The amounts reflect the CAD equivalent of the FEI-approved USD value..

PLEASE SEE THE APPROVED FEI SCHEDULE FOR FULL DETAILS.

25% breakdown will apply to non-ranking competitions, 30% breakdown will apply to ranking competitions.

635 MCNERNEY CUP	\$45,000	630 KUBOTA CUP	\$90,000
FEI • CATEGORY D		FEI • CATEGORY C	
Height: 1.45m		Height: 1.50m	
Scoring: One Jump Off		Scoring: Winning Round	
636 THE CREW	\$15,000	Top 25 riders	
Height: 1.45m		One horse per rider	
Scoring: One Round, Naturals optioned		640 JAYMAN BUILT CUP	\$90,000
637 FRIENDS OF THE MEADOWS	\$45,000	FEI • CATEGORY C	
FEI • CATEGORY D		Height: 1.55m	
Height: 1.50m		Scoring: One Jump Off	
Scoring: One Jump Off		Qualifier for GP	
638 ATCO CUP	\$45,000	641 ATCO QUEEN ELIZABETH II CUP	\$1,000,000
FEI • CATEGORY D		FEI • CATEGORY AA	
Height: 1.50m		Height: 1.60m	
Scoring: One Jump Off		Scoring: 2 Rounds	
Qualifier for WR		Top 40	
		One horse per rider	

'MASTERS'

CSIO 5[★]/2[★]
National Divisions

Sep. 8–13, 2026

Scott Brash (GBR) & Hello Jefferson,
winners of the 2025 CPKC 'International',
presented by Rolex





TOURNAMENT STAFF

MEMBERS OF THE ORGANIZING COMMITTEE

Linda Southern-Heathcott
President & CEO

Marg Southern
Tournament Co-Chairman

Nancy Southern
Tournament Co-Chairman

Joanne Nimitz
Tournament Secretary

Ian Allison
Media

COMPETITIONS MANAGERS

Conor Charlton
Thomas French
Andrew More

TOURNAMENT OFFICE

Haley Hawes
Kate Metikosh

HOSTING

Mayank Bhargava

SUSTAINABILITY

Ron Heathcott

TOURNAMENT OFFICIALS

PRESIDENT OF THE GROUND JURY

David Distler

FOREIGN JUDGE

Anna Lindqvist (SWE)

JUDGES

Courtney Anderson
Gay-Ellen Dennis
Wendy Graham
Colleen Hoffman
Lisa Osachoff
Anne Reid
Lorne Robertson

5* COURSE DESIGNER

Leopoldo Palacios (VEN)

2* COURSE DESIGNER

Anderson Lima (MEX)

ASSISTANT COURSE DESIGNERS

Anthony D'Ambrosio
Will Dean Stobie
Florencio Hernandez
Jedd Smith
Peter Wong

CHIEF STEWARD

Susan Hawes

FOREIGN STEWARD

Maria Biancone (USA)

NIGHT STEWARD

Fraser Parrington

STEWARDS

Peeter Aitken
Barbara Bergstrom
Patricia Chalmers
Heather Findlay
Amelia Gomez
Monica Gomezngl
Philippa Keegan
Madeline Lopez Conway
Shirley Pedersen
Pol Marine Vandenperrenboom

VETERINARY COMMISSION

Dr. Bernd Stanglmeier - President
Dr. Mark Sinnott (GBR)- Foreign Delegate
Dr. Katy White - Assistant Delegate

TREATING VETERINARIAN

TD Equine Veterinary Group
Dr. Dan French

FARRIER

RCH International
Charlie Heathcott
Tom Linford

ALL HORSES must be on the grounds by MONDAY, SEPTEMBER 7



DEFINITE DATE: AUGUST 14

Please submit your entry **NO LATER THAN AUGUST 14** if you are Canadian Athlete or a Foreign Athlete requesting an invitation



JOG

Tuesday, September 8



CHANGING DIVISIONS

Movement between FEI & EC divisions after the definite date may be restricted.



PLEASE NOTE!

FEI division subject to change until the FEI Schedule has been approved. Please see approved FEI schedule for complete details



EQUESTRIAN CANADA ÉQUESTRE



CLOSING DATE

Your completed entry form(s) must be submitted no later than **4:00 P.M. on Thursday, August 13**



NOMINATION CHANGES

(add/drop) must be completed by **4:00 P.M. on Monday, September 7**



PLEASE NOTE!

You will be charged \$150, in addition to the nomination fee, for any new divisions added while at the Tournament. Nomination fees will **NOT** be refunded for those divisions withdrawn from after September 7. EC Horses may jump twice per day.



1.10M JUMPER

Nomination Fee: \$200

Eligible Riders: Open to all riders.

Jumps: to 1.10m (3'6"). • **Speed:** 350 meters per minute.

801 FRIENDS OF THE MEADOWS - 1.10M \$2,500

Scoring: Table A, Article 220.2.1.1 One Round

Start Fee: \$150

802 FRIENDS OF THE MEADOWS - 1.10M \$2,500

Scoring: Table A, Article 220.2.1.2 One Jump Off

Start Fee: \$150

803 FRIENDS OF THE MEADOWS - 1.10M \$5,000

Scoring: Table A, Articles 220.2.1.2 One Jump Off

Start Fee: \$250

804 FRIENDS OF THE MEADOWS - 1.10M \$5,000

Scoring: Table A, Article 220.2.1.2 One Jump Off

Start Fee: \$250

1.20M JUMPER

Nomination Fee: \$200

Eligible Riders: Open to all riders.

Jumps: to 1.20m (4'). • **Speed:** 350 meters per minute.

805 HORSEWARE IRELAND CUP - 1.20M \$2,500

Scoring: Table A, Article 220.2.1.1 One Round

Start Fee: \$150

806 TRIMAC CUP - 1.20M \$5,000

Scoring: Table A, Article 220.2.1.2 One Jump Off

Start Fee: \$250

807 FRIENDS OF THE MEADOWS - 1.20M \$5,000

Scoring: Table A, Article 220.2.1.2 One Jump Off

Start Fee: \$250

808 FRIENDS OF THE MEADOWS - 1.20M \$7,500

Scoring: Table A, Article 220.2.1.2 One Jump Off

Start Fee: \$275

1.30M JUMPER

Nomination Fee: \$200

Eligible Riders: Open to all riders.

Jumps: to 1.30m (4'3"). • **Speed:** 350 meters per minute.

809 FRIENDS OF THE MEADOWS - 1.30M \$5,000

Scoring: Table A, Article 220.2.1.1 One Round

Start Fee: \$250

810 OXFORD PROPERTIES CUP - 1.30M \$5,000

Scoring: Table A, Article 220.2.1.2 One Jump Off

Start Fee: \$250

811 PH & N CUP - 1.30M \$7,500

Scoring: Table A, Article 220.2.1.2 One Jump Off

Start Fee: \$275

812 ENBRIDGE CUP - 1.30M \$15,000

Scoring: Table A, Article 220.2.1.2 One Jump Off

Start Fee: \$375



CSI 2*

Open to all horse/rider combinations entered and accepted in the FEI entry system.

FEI prize money, as listed in the prize list, is awarded in Canadian dollars (CAD). The amounts reflect the CAD equivalent of the FEI-approved USD value.

PLEASE SEE THE APPROVED FEI SCHEDULE FOR FULL DETAILS.

25% breakdown will apply to non-ranking competitions, 33% breakdown will apply to ranking competitions.

<p>813 RICHARDSON WEALTH CUP-1.40M \$7,500 Scoring: One Jump Off</p>	<p>815 PARAMOUNT RESOURCES CUP - 1.45M \$90,000 FEI • CATEGORY C Scoring: One Jump Off</p>
<p>814 PWC CUP - 1.40M–1.45M \$10,000 Scoring: One Jump Off Qualifier for GP</p>	<p>816 FRIENDS OF THE MEADOWS 2* GRAND PRIX - 1.45M \$90,000 FEI • CATEGORY C Scoring: One Jump Off Top 30 One horse per rider</p>

CSIO 5*

Open to all horse/rider combinations who have been entered and accepted in the FEI entry system.

FEI prize money, as listed in the prize list, is awarded in Canadian dollars (CAD). The amounts reflect the CAD equivalent of the FEI-approved USD value..

PLEASE SEE THE APPROVED FEI SCHEDULE FOR FULL DETAILS.

25% breakdown will apply to non-ranking competitions, 33% breakdown will apply to ranking competitions.

<p>817 TELUS CUP - 1.50M \$45,000 FEI • CATEGORY D Scoring: One Round Qualifier for GP</p>	<p>822 CANA CUP - 1.55M \$100,000 FEI • CATEGORY C Scoring: One Jump Off Qualifier for GP</p>
<p>818 ATCO CUP - 1.50M \$90,000 FEI • CATEGORY C Scoring: Winning Round Qualifier for GP</p>	<p>823 TOURMALINE CUP - 1.60M \$150,000 FEI • CATEGORY B Scoring: One Jump Off Qualifier for GP</p>
<p>819 ATCO ELECTRIC 6 BAR \$150,000 Scoring: Progressive Heights One horse per rider</p>	<p>824 BMO NATIONS CUP - 1.60M \$600,000 FEI • CATEGORY H Scoring: Nations Cup One horse per rider Qualifier for GP</p>
<p>820 SUNCOR ENERGY CUP - 1.50M \$120,000 FEI • CATEGORY C Scoring: One Jump Off One horse per rider</p>	<p>825 CPKC INTERNATIONAL, PRESENTED BY ROLEX - 1.60M \$3,000,000 FEI • CATEGORY AA Scoring: Two Rounds Top 40 One horse per rider</p>
<p>821 CARDEL HOMES CUP - 1.50M \$90,000 FEI • CATEGORY C Scoring: One Jump Off Qualifier for GP</p>	



'MASTERS' TOURNAMENT • SEPTEMBER 8-13, 2026

This schedule will be adjusted after the closing date once entries have been received. In addition, this schedule will change nightly once starts have been received. Please be sure to refer to the adjusted schedule for this Tournament, available online at www.sprucemeadows.com or at the Tournament Office.

FEI Definite Date:
Friday, August 14

Horse Arrival Deadline:
Monday, September 7

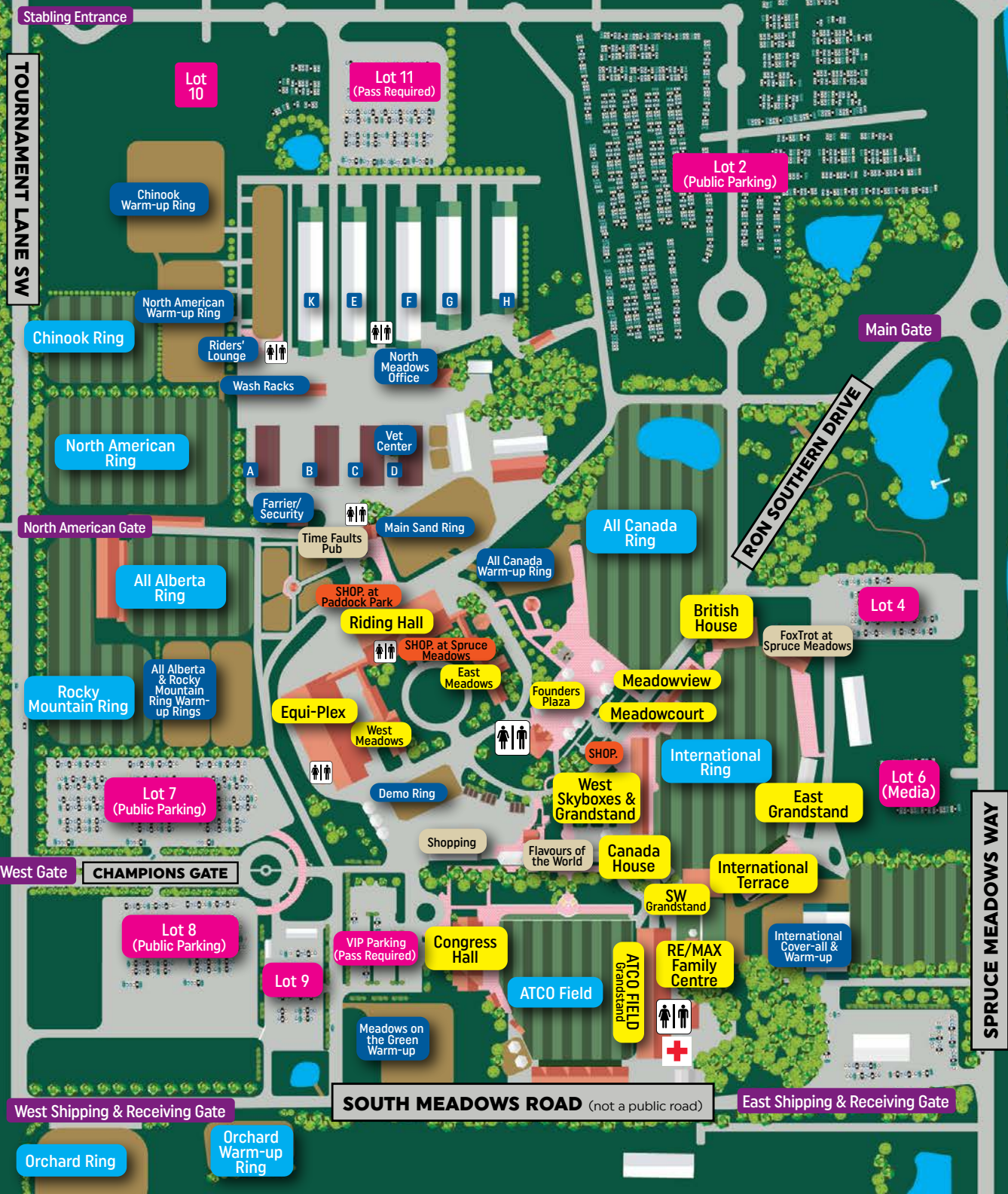
FEI Jog:
Tuesday, September 8

	8 A.M.	9 A.M.	10 A.M.	11 A.M.	12 P.M.	1 P.M.	2 P.M.	3 P.M.	4 P.M.	5 P.M.	6 P.M.	7 P.M.	8 P.M.	9 P.M.
TUESDAY, SEPTEMBER 8	International Ring							2:00 P.M. OFFICIALS MEETING North Meadows	3:30 P.M. COURSE DESIGNER MEETING					
	Chinook Sand Ring			10:00 A.M. FEI JOG CSI2*	11:00 A.M. FEI JOG CSI05*									
	All Canada Ring				#809 \$5,000 FRIENDS OF THE MEADOWS 1.30m (One Round)		#805 \$2,500 HORSEWARE IRELAND CUP 1.20m (One Round)		#801 \$2,500 FRIENDS OF THE MEADOWS 1.10m (One Round)					
WEDNESDAY, SEPTEMBER 9	International Ring	8:00 A.M. CHEF D'EQUIPE MEETING North Meadows		#817 \$45,000 TELUS CUP 1.50m (One Round) Q				#821 \$90,000 CARDEL HOMES CUP 1.55m (One Jump Off) Q						
	All Canada Ring		#802 \$2,500 FRIENDS OF THE MEADOWS 1.10m (One Jump Off)		#806 \$5,000 TRIMAC CUP 1.20m (One Jump Off)		#813 \$7,500 RICHARDSON WEALTH CUP 1.40m (One Jump Off)		#810 \$5,000 OXFORD PROPERTIES CUP 1.30m (One Jump Off)					
	Foxtrot Restaurant										5:30 P.M. FEI RIDERS WELCOME BBQ Foxtrot Restaurant			
THURSDAY, SEPTEMBER 10	International Ring		#818 ATCO CUP (PHASE I) 1.50m	#818 \$90,000 ATCO CUP (PHASE II) 1.50m (Winning Round) Q				#822 \$100,000 CANA CUP 1.60m (One Jump Off) Q						
	All Canada Ring		#807 \$5,000 FRIENDS OF THE MEADOWS 1.20m (One Jump Off)	#814 \$10,000 PH&N CUP 1.45m (One Jump Off)		#811 \$7,500 PWC CUP 1.30m (One Jump Off)		#803 \$5,000 FRIENDS OF THE MEADOWS 1.10m (One Jump Off)						
FRIDAY, SEPTEMBER 11	International Ring			#815 \$90,000 PARAMOUNT RESOURCES CUP 1.45m (One Jump Off) Q						#823 \$150,000 TOURMALINE OIL CUP 1.60m (One Jump Off) Q			#819 \$150,000 ATCO ELECTRIC Six Bar FIREWORKS	
	All Canada Ring		#804 \$5,000 FRIENDS OF THE MEADOWS 1.10m (One Jump Off)	#808 \$7,500 FRIENDS OF THE MEADOWS 1.20m (One Jump Off)		#812 \$15,000 FRIENDS OF THE MEADOWS 1.30m (One Jump Off)								
SATURDAY, SEPTEMBER 12	International Ring	CLOSED COURSE		#824 \$600,000 BMO NATIONS CUP (ROUND ONE) 1.60m (Nations Cup) SPECIAL FEATURES				#824 \$600,000 BMO NATIONS CUP (ROUND TWO) 1.60m (Nations Cup)						
	All Canada Ring	CLOSED COURSE		#816 \$90,000 FRIENDS OF THE MEADOWS 1.45m (One Jump Off)										
SUNDAY, SEPT. 13	International Ring	JUDGE'S COURSE WALKS		#820 \$120,000 SUNCOR CUP 1.50m (One Jump Off)			#825 \$3,000,000 CPKG 'International' presented by Rolex 1.60m (Two Rounds) SPECIAL FEATURES							

■ CSI05* ■ CSI5* ■ CSI2* ■ National ■ Judge's Course Walk ■ Q This competition is a Qualifier for another competition.

SPRUCE MEADOWS GREEN

TOURNAMENT LANE SW



Stabling Entrance

Lot 10

Lot 11 (Pass Required)

Lot 2 (Public Parking)

Main Gate

RON SOUTHERN DRIVE

Lot 4

Lot 6 (Media)

West Gate

CHAMPIONS GATE

Lot 7 (Public Parking)

Lot 8 (Public Parking)

Lot 9

SOUTH MEADOWS ROAD (not a public road)

East Shipping & Receiving Gate

SPRUCE MEADOWS WAY



SPRUCE MEADOWS GROUNDS MAP



SPRUCE MEADOWS

2027 TOURNAMENT DATES

January Classic	January 29–31, 2027
February Classic	February 19–21, 2027
Winter Farewell	March 4–7, 2027
Spring Welcome	March 11–14, 2027
May Classic	May 6–9, 2027
'Continental'	June 9–13, 2027
'National' presented by Rolex	June 15–20, 2027
'Pan American' presented by Rolex	June 30–July 04, 2027
'North American' presented by Rolex	July 6–11, 2027
August Classic I	August 11–15, 2027
August Classic II	August 19–22, 2027
'Masters'	September 7–12, 2027
Harvest Classic	September 23–26, 2027

*SUBJECT TO CHANGE



SPRUCE MEADOWS



BRINGING HOME YOUR CHAMPION

EQUINE FLIGHT SPECIALISTS



Overseas Horse Services is the leading provider of equine flight transportation in Canada. With a focus on safety, efficiency, and the well-being of the horses, OHS offers a comprehensive range of services including international and domestic flights, charter flights, quarantine management, and logistical support.

OHS IS THE OFFICIAL EQUINE AIR TRANSPORT PROVIDER OF SPRUCE MEADOWS.

For many years, Overseas Horse Services and Spruce Meadows have collaborated to elevate the logistics behind premier equestrian competitions. The result is a smooth and reliable transportation experience that lets riders and teams concentrate on competition while their horses receive the highest standard of care and support.

